

A

AUTOGRAPH

COLLECTION

---

DAMAC HILLS

**DAMAC**  
HILLS



LIMITED IN  
*Number*

*A*

LIMITLESS IN

*Allure*





CHOOSE YOUR

*Signature*



*A*

A

AUTOGRAPH

COLLECTION

DAMAC HILLS

BOUTIQUE VILLAS ACROSS DAMAC HILLS



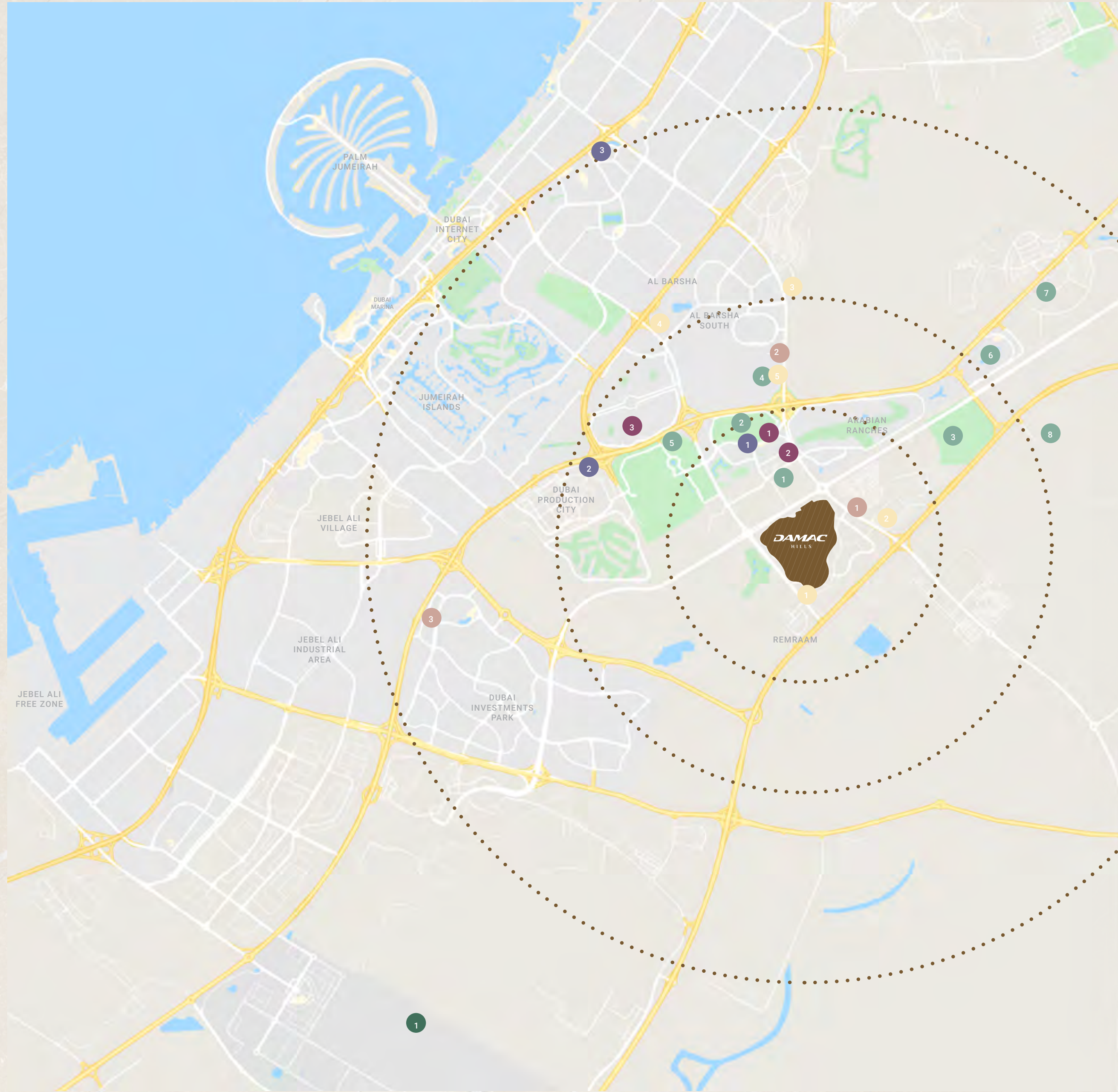


SET APART BY

*Distinction*

Autograph Collection is a new and highly-curated selection of exquisite villas in DAMAC Hills, each one the embodiment of heartfelt community spirit and sophistication. These independently-designed homes draw their inspiration from subtle, contemporary aesthetics that celebrate the lush environment they are in.

# DAMAC HILLS CLOSE TO *Everything*



### SPORTS AND LEISURE

- 1 Dubai Polo & Equestrian Club – 10 minutes
- 2 Dubai Autodrome – 12 minutes
- 3 Plantation Equestrian and Polo Club – 11 minutes
- 4 Miracle Garden – 13 minutes
- 5 Dubai International Stadium – 14 minutes
- 6 Global Village – 14 minutes
- 7 IMG Worlds of Adventure – 14 minutes
- 8 Hamdan Sports Complex – 15 minutes

### MALLS

- 1 First Avenue Mall – 11 minutes
- 2 City Centre Me'aisem – 14 minutes
- 3 Mall of the Emirates – 24 minutes

### AIRPORT

- 1 Al Maktoum International Airport – 28 minutes

### HOSPITALS

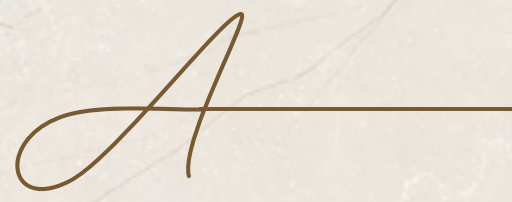
- 1 Aster Medical Centre – 9 minutes
- 2 Mediclinic Parkview Hospital – 12 minutes
- 3 NMC Royal Hospital – 19 minutes

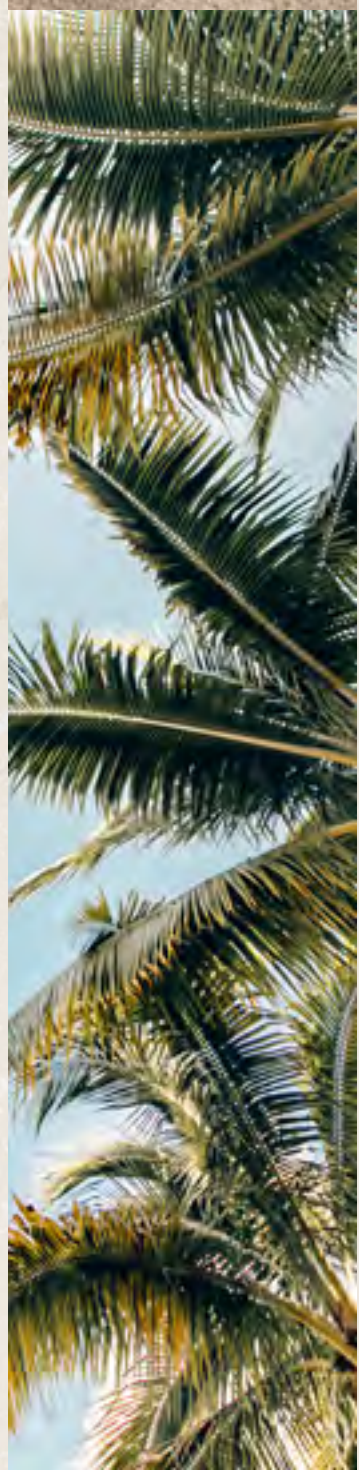
### HOTELS

- 1 Park Inn by Radisson – 10 minutes
- 2 Studio One Hotel – 9 minutes
- 3 FIVE Jumeirah Village Hotel – 19 minutes

### SCHOOLS

- 1 Jebel Ali School – 5 minutes
- 2 Fairgreen International School – 11 minutes
- 3 Global Indian International School – 16 minutes
- 4 Safa Community School – 18 minutes
- 5 Kings' School – 21 minutes





# LOCATED IN A MASTER COMMUNITY

## CLUSTERS

- 1 Trinity
- 2 Pelham
- 3 Rochester
- 4 Rockwood
- 5 Richmond
- 6 Topanga
- 7 The Field
- 8 Piccadilly Green
- 9 Queens Meadow
- 10 Silver Springs
- 11 Legends
- 12 Whitefield
- 13 Cavalli Estates
- 14 Brookfield
- 15 Bellavista (Carson) A, B, C
- 16 Golf Vita
- 17 Artesia B, C, A

- 18 The Trump Estates
- 19 Ventura Mall
- 20 Golf Promenade 2, 3, 4, 5
- 21 Loreto 1, 2, 3
- 22 Jasmine & Orchid
- 23 Calero
- 24 Phoenix
- 25 The Turf
- 26 The Flora
- 27 Longview
- 28 Veneto
- 29 Golf Panorama, Veduta, Vista, Terrace
- 30 Utopia

## ESSENTIALS

- 1 Jebel Ali International School
- 2 CreaKids Nursery
- 3 Line Circle Cafe
- 4 Food Trucks
- 5 Carrefour Supermarket
- 6 Corner Barber
- 7 4Her Salon
- 8 Community Centre
- 9 Radisson Dubai DAMAC Hills
- 10 Trump International Golf Club, Dubai
- 11 Prato / 71 Sports Bar
- 12 Spinneys Supermarket
- 13 Bakericious Supermarket
- 14 Saudi German Clinic
- 15 Medicina Pharmacy
- 16 Viva Supermarket
- 17 Maison de Coiffure

## AMENITIES

- 1 Basketball Court
- 2 Football Court
- 3 Tennis Court
- 4 Cricket Field
- 5 Volleyball Court
- 6 BBQ Area
- 7 Kids Play Area
- 8 Kids Crazy Golf
- 9 Ice Rink
- 10 Horse Stables
- 11 Catch & Release
- 12 Jogging Track
- 13 Skate Park
- 14 Central Park
- 15 Picnic Park
- 16 Fruit Park
- 17 Wet Wadi Fountain
- 18 Lake
- 19 Fishing Lake
- 20 Malibu Bay
- 21 Petting Farm
- 22 Golf Course
- 23 Events Area
- 24 Community Centre
- 25 Padel Court





SPACE TO  
BREATHE IN

*The place to be*

*A*



# DAMAC HILLS

Autograph Collection is situated in DAMAC Hills, connected to the incredible amenities of the established, 42 million sqft community with nearly four million sqft of parkland.

From DAMAC Mall to the acclaimed Trump International Golf Club, Dubai, stables, skate park, Malibu Bay wave pool, luxury dining and entertainment options, multi-sports amenities and more, you will truly want for nothing.





Slip into your swimwear, grab your goggles and cool off at Malibu Bay – the always-trendy wave pool at DAMAC Hills. Make time to bobble, dunk and jump the ocean-like waves or relax in the shallows with beach-like vibes, hip F&B outlets and lots more.

A

DESIGNED TO BE

*Exceptional*

50 villas, 14 typologies, four to seven bedrooms and an infinite array of possibilities await within Autograph Collection. Each of the villas has been conceptualised to offer residents a unique lifestyle within their homes, from customisable spaces to secluded niches of greenery.





A

TYPOLOGIES

7BR+  
SERIES



LV55E



J220B



H102F



V-64S



LV3E



LV4E



V-52S

A

TYPOLOGIES

6BR+  
SERIES



V-27S



2B222B

A

TYPOLOGIES

5BR+  
SERIES



V-23T



THH-PH, THH-PH M

A

TYPOLOGIES

4BR+  
SERIES



# EVERY GREAT STORY DESERVES A GREAT

*Stage*

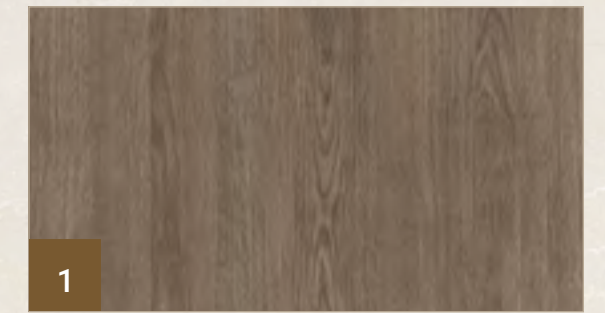
Marbles quarried in Italy, Greece and Spain, woods sourced from around the world as well as metals flexed into architectural perfection make up the intricate material narrative within Autograph Collection. While each villa has its own unique personality, the thread that binds them together is their exquisite use of textures and substrates.



*A*



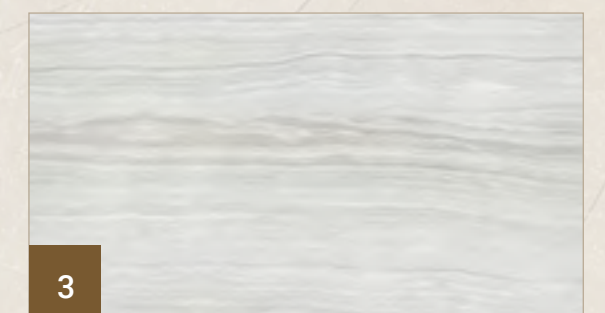
## ENTRANCE LOBBY



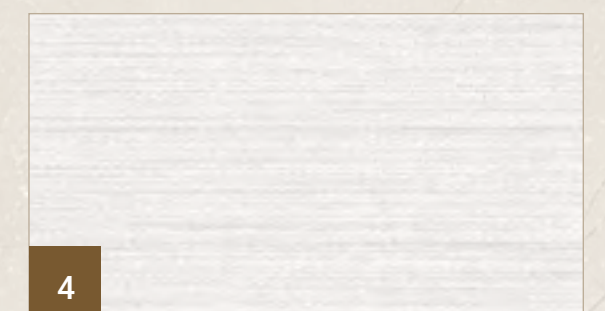
1  
Timber Veneer



2  
Armani Grey Marble



3  
Serpentine Marble



4  
Textured Wallpaper

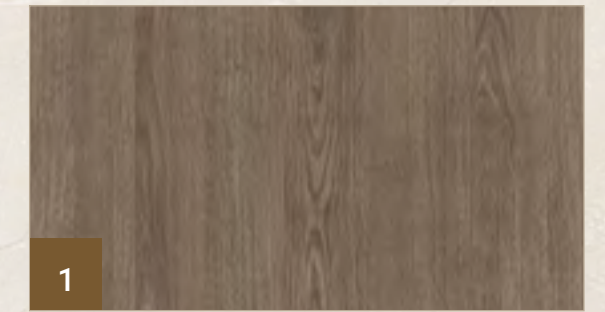


5  
Fluted Serpentine Marble



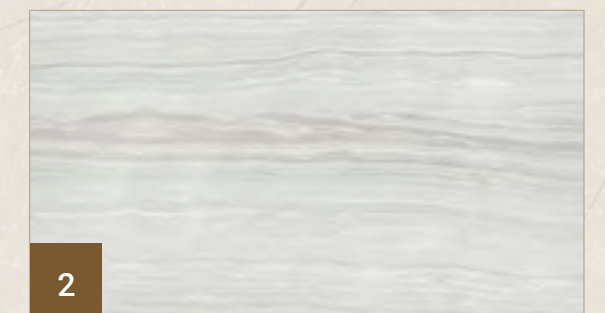


## FORMAL DINING & LIVING



1

Timber Veneer



2

Serpentine Marble



3

Brushed Bronze Metal



4

Armani Grey Marble



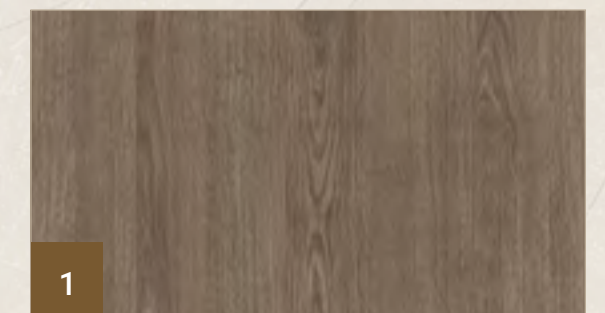


THRIVE IN  
*Tranquility*



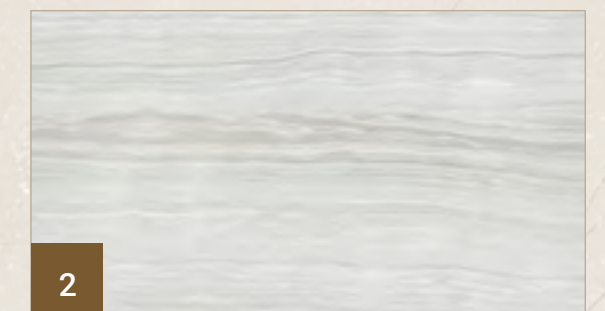


## FAMILY AREA & SHOW KITCHEN



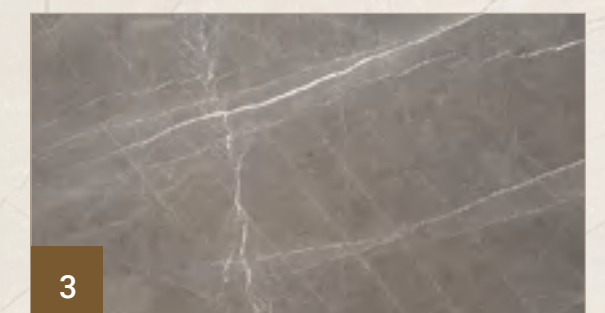
1

Timber Veneer



2

Serpentine Marble



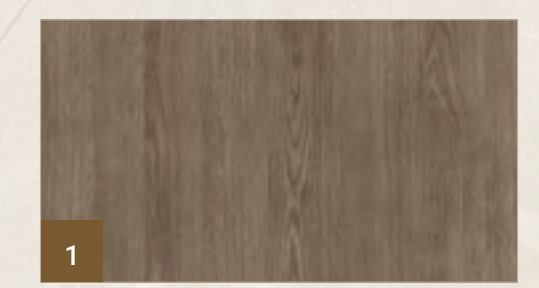
3

Armani Grey Marble





## PRIMARY BEDROOM



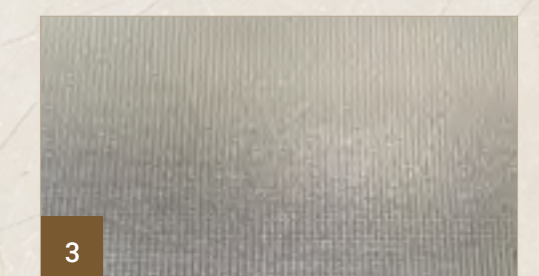
1

Timber Veneer



2

Textured Wallpaper



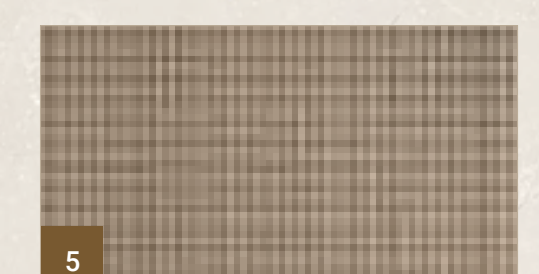
3

Textured Glass



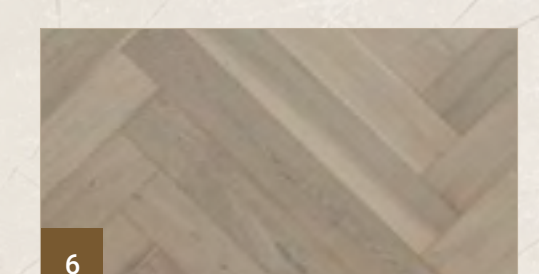
4

Bronze Metal



5

Metal Mesh



6

Parquet Flooring





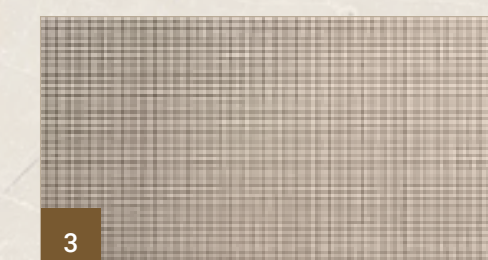
## WALK-IN CLOSET



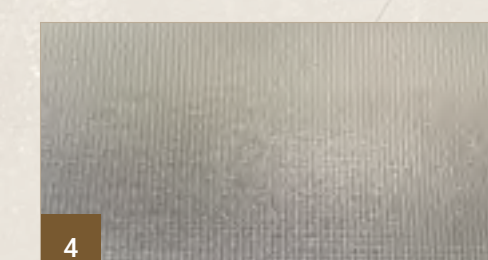
1  
Textured Wallpaper



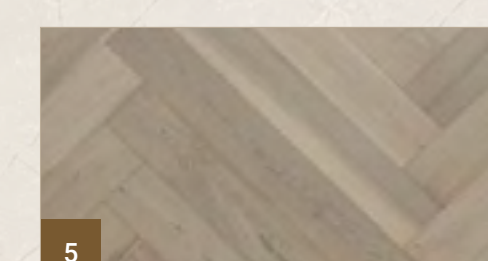
2  
Brushed Bronze Metal



3  
Mesh Glass



4  
Textured Glass



5  
Parquet Flooring





## PRIMARY ENSUITE



1

Arabescato Corcia Porcelain Tile



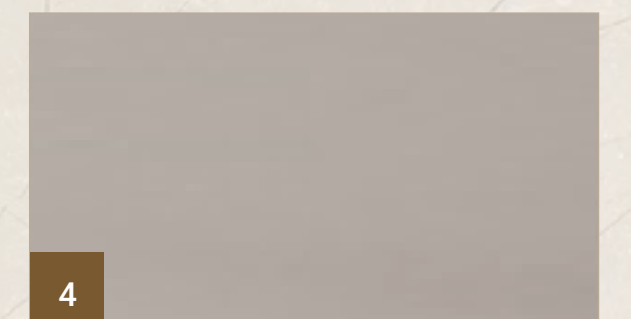
2

Frosted Glass



3

White Marble Porcelain Tile



4

Semi-gloss Lacquer







## ROOF FLOOR MULTIPURPOSE ROOM



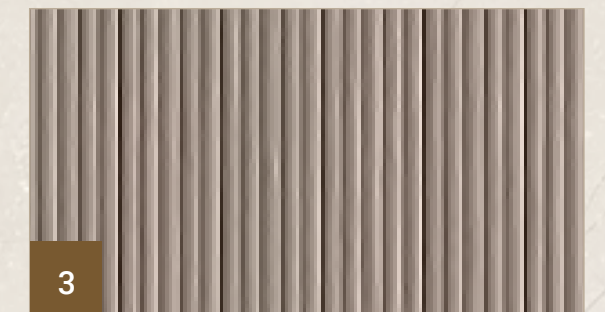
1

Serpentine Marble



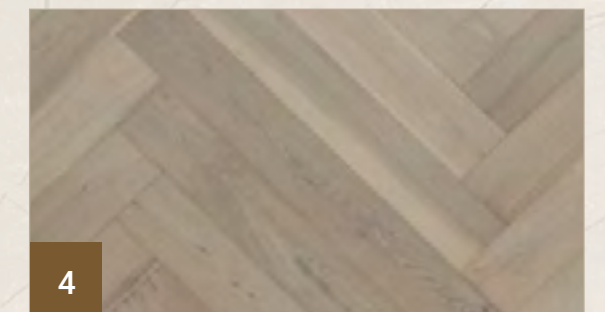
2

Nero Marquina Porcelain Tile



3

Fluted Timber



4

Parquet Flooring



A

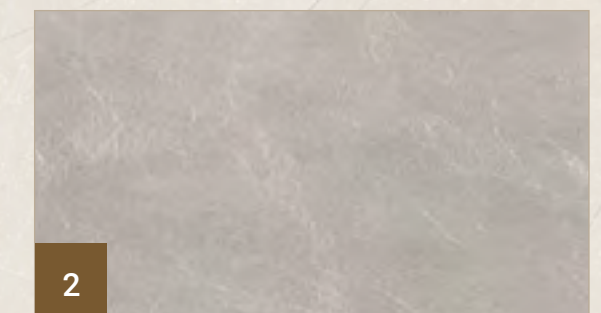


## BASEMENT ENTERTAINMENT AREA



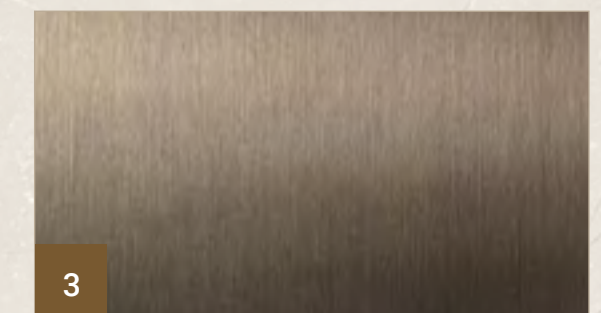
1

Orobico Porcelain Tile



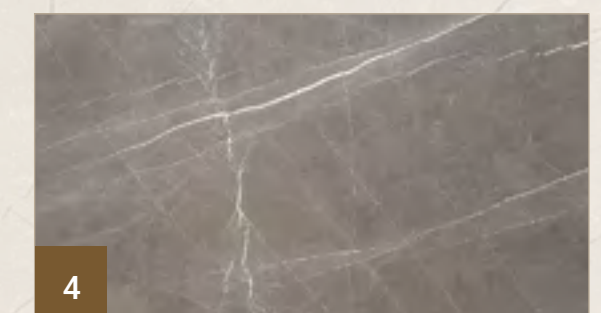
2

Faux Suede Fabric



3

Bronze Metal



4

Armani Grey Marble





A

AUTOGRAPH

COLLECTION

DAMAC HILLS

COLLECTION MAP

TYPE	UNIT	COLOR KEY	NUMBER OF UNITS
7BR	LVD1E		5
7BR	V-1100A		3
7BR	V-1100B		2
6BR	LV55E		5
6BR	H102F		2
6BR	V-64S		7
6BR	J220B		1
6BR	LV3E		12
6BR	LV4E		3
6BR	V-52S		3
5BR	V-27S		3
5BR	2B222B		1
4BR	THH-PH		1
4BR	THH-PH M		1
4BR	V-23T		1

A

AUTOGRAPH

COLLECTION

DAMAC HILLS

---

TYOLOGY SERIES

7 BEDROOM

EXTRAVAGANT & EXTRAORDINARY

# 7BR+ SERIES

LVD1E

*A*  
AUTOGRAPH  
COLLECTION



FRONT-FACING

AUTOGRAPH COLLECTION - DAMAC HILLS



# 7BR+ SERIES

LVD1E

A  
AUTOGRAPH  
COLLECTION



REAR-FACING

AUTOGRAPH COLLECTION - DAMAC HILLS

*A*  
**AUTOGRAPH**  
 COLLECTION

**7BR+ SERIES**  
**LVD1E**

Saleable Area

**10,672.85 sqft**

Plot Area Range

**6,617 - 10,165 sqft**

Clusters

**FIELD | FLORA | TURF**



BASEMENT FLOOR



GROUND FLOOR



FIRST FLOOR



ROOF FLOOR



# 7BR+ SERIES

V1100-A

A

AUTOGRAPH  
COLLECTION

AUTOGRAPH COLLECTION - DAMAC HILLS



FRONT-FACING

# 7BR+ SERIES

V1100-A

A

AUTOGRAPH  
COLLECTION

AUTOGRAPH COLLECTION - DAMAC HILLS



REAR-FACING

A

*A*  
**AUTOGRAPH**  
 COLLECTION

**7BR+ SERIES**  
**V1100-A**

Saleable Area  
**22,803.53 sqft**

Plot Area Range  
**14,210 - 15,292 sqft**

Cluster  
**TURF**



BASEMENT FLOOR



GROUND FLOOR



FIRST FLOOR



ROOF FLOOR

# 7BR+ SERIES

V1100-B

A

AUTOGRAPH  
COLLECTION

AUTOGRAPH COLLECTION - DAMAC HILLS



FRONT-FACING

A

# 7BR+ SERIES

V1100-B

A

AUTOGRAPH  
COLLECTION

AUTOGRAPH COLLECTION - DAMAC HILLS



REAR-FACING

A

A  
AUTOGRAPH  
COLLECTION

**7BR+ SERIES**  
**V1100-B**

Saleable Area  
**22,744.87 sqft**

Plot Area Range  
**13,923 - 15,366 sqft**

Cluster  
**TURF**



BASEMENT FLOOR



GROUND FLOOR



FIRST FLOOR



ROOF FLOOR

A

AUTOGRAPH

COLLECTION

DAMAC HILLS

---

TYOLOGY SERIES

6 BEDROOM

MAGNIFICENT & MAGNETIC

# 6BR+ SERIES

LV55E

A  
AUTOGRAPH  
COLLECTION



FRONT-FACING

AUTOGRAPH COLLECTION - DAMAC HILLS



# 6BR+ SERIES

LV55E

A  
AUTOGRAPH  
COLLECTION



REAR-FACING

AUTOGRAPH COLLECTION - DAMAC HILLS

*A*  
**AUTOGRAPH**  
 COLLECTION

**6BR+ SERIES**  
**LV55E**

Saleable Area  
**10,991.57 sqft**  
 Plot Area Range  
**8,425 - 11,598 sqft**

Clusters  
**BROOKFIELD**  
**SILVER SPRING | TURF**



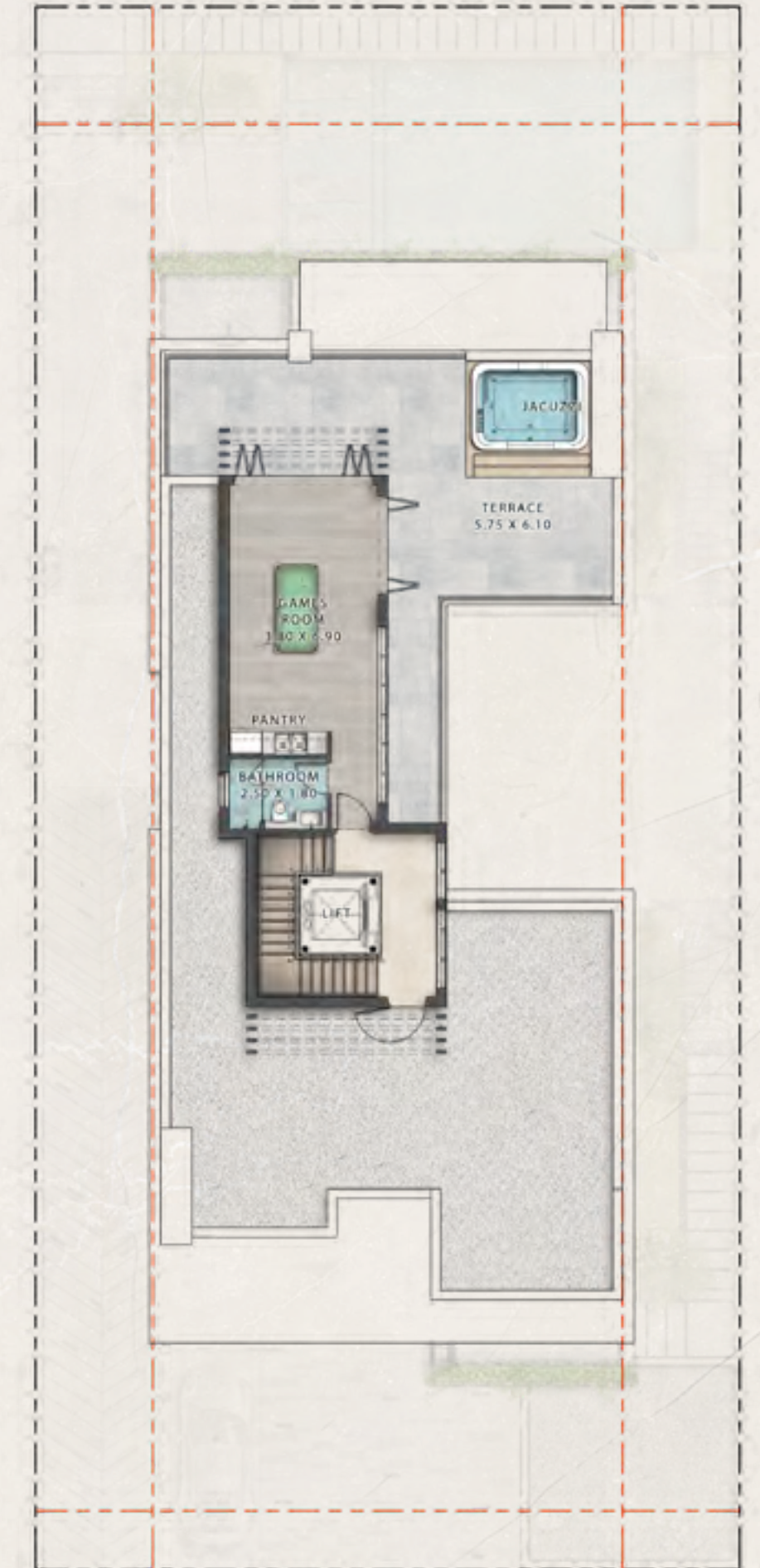
BASEMENT FLOOR



GROUND FLOOR



FIRST FLOOR



ROOF FLOOR

# 6BR+ SERIES

H102F

A  
AUTOGRAPH  
COLLECTION



FRONT-FACING

AUTOGRAPH COLLECTION - DAMAC HILLS



# 6BR+ SERIES

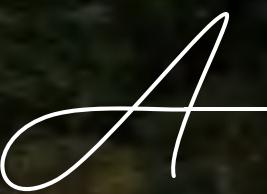
H102F

*A*  
AUTOGRAPH  
COLLECTION

AUTOGRAPH COLLECTION - DAMAC HILLS



REAR-FACING



*A*  
**AUTOGRAPH**  
 COLLECTION

**6BR+ SERIES**  
**H102F**

Saleable Area  
**10,519.76 sqft**

Plot Area Range  
**6,234 - 6,455 sqft**

Cluster  
**FLORA**



BASEMENT FLOOR



GROUND FLOOR



FIRST FLOOR



ROOF FLOOR

# 6BR+ SERIES

V64-S

*A*  
AUTOGRAPH  
COLLECTION



FRONT-FACING

# 6BR+ SERIES

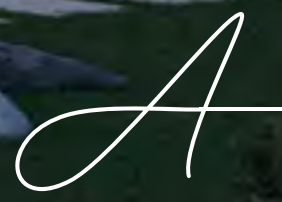
V64-S

*A*  
AUTOGRAPH  
COLLECTION



REAR-FACING

AUTOGRAPH COLLECTION - DAMAC HILLS



*A*  
**AUTOGRAPH**  
 COLLECTION

**6BR+ SERIES**  
**V64-S**

Saleable Area

**13,248.55 sqft**

Plot Area Range

**7,521 - 7,808 sqft**

Clusters

**LONG VIEW | PHOENIX**



BASEMENT FLOOR



GROUND FLOOR



FIRST FLOOR



ROOF FLOOR



# 6BR+ SERIES

J220B

A  
AUTOGRAPH  
COLLECTION

AUTOGRAPH COLLECTION - DAMAC HILLS



FRONT-FACING

# 6BR+ SERIES

J220B

*A*  
AUTOGRAPH  
COLLECTION



REAR-FACING

AUTOGRAPH COLLECTION - DAMAC HILLS



*A*  
**AUTOGRAPH**  
 COLLECTION

**6BR+ SERIES**  
**J220B**

Saleable Area  
**5,553.58 sqft**

Plot Area  
**5,178 sqft**

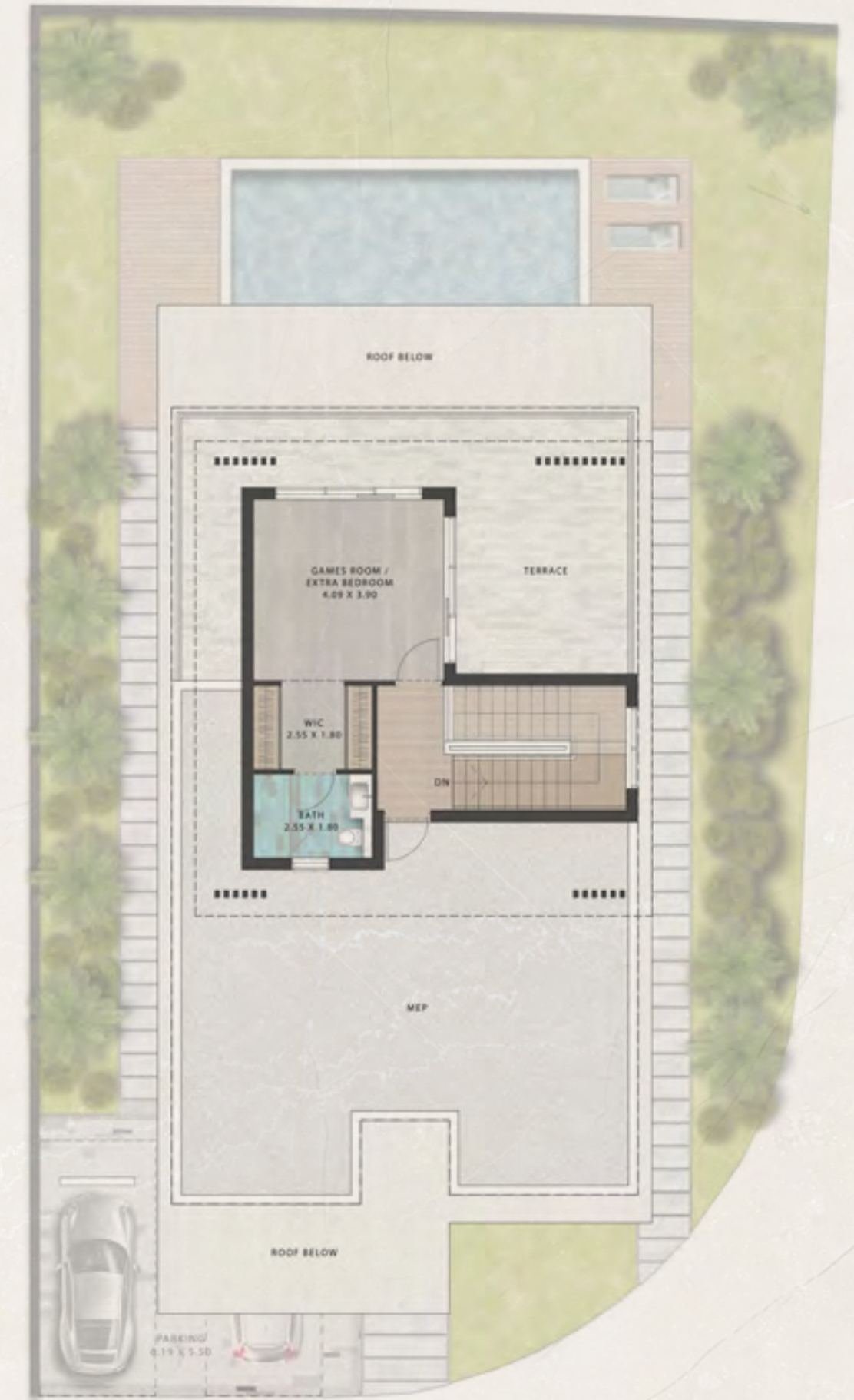
Cluster  
**FIELD**



GROUND FLOOR



FIRST FLOOR



ROOF FLOOR

# 6BR+ SERIES

LV3E

*A*  
AUTOGRAPH  
COLLECTION



FRONT-FACING

AUTOGRAPH COLLECTION - DAMAC HILLS

# 6BR+ SERIES

LV3E

A

AUTOGRAPH  
COLLECTION

AUTOGRAPH COLLECTION - DAMAC HILLS



REAR-FACING

A  
AUTOGRAPH  
COLLECTION

6BR+ SERIES  
LV3E

Saleable Area

4,572.83 sqft

Plot Area Range

4,842 - 6,722 sqft

Clusters

FIELD | LONG VIEW

PELHAM | PHOENIX | TURF |



GROUND FLOOR



FIRST FLOOR

# 6BR+ SERIES

LV4E

A

AUTOGRAPH  
COLLECTION

AUTOGRAPH COLLECTION - DAMAC HILLS



FRONT-FACING

# 6BR+ SERIES

LV4E

A

AUTOGRAPH  
COLLECTION



AUTOGRAPH COLLECTION - DAMAC HILLS

REAR-FACING



*A*  
**AUTOGRAPH**  
 COLLECTION

**6BR+ SERIES**  
**LV4E**

Saleable Area

**4,066.82 sqft**

Plot Area Range

**4,847 - 6,410 sqft**

Clusters

**SILVER SPRING | TRINITY**



GROUND FLOOR



FIRST FLOOR

# 6BR+ SERIES

V52-S

A

AUTOGRAPH  
COLLECTION



FRONT-FACING



# 6BR+ SERIES

V52-S

A  
AUTOGRAPH  
COLLECTION



REAR-FACING

AUTOGRAPH COLLECTION - DAMAC HILLS



*A*  
AUTOGRAPH  
COLLECTION

**6BR+ SERIES**  
**V52-S**

Saleable Area  
**9,555.31 sqft**

Plot Area Range  
**7,419 - 8,654 sqft**

Clusters  
**SILVER SPRING | TURF**



BASEMENT FLOOR



GROUND FLOOR



FIRST FLOOR



ROOF FLOOR

A

AUTOGRAPH

COLLECTION

DAMAC HILLS

---

TYOLOGY SERIES

5 BEDROOM

CURATED & CAPTIVATING

# 5BR+ SERIES

V27-S

A

AUTOGRAPH  
COLLECTION



FRONT-FACING

AUTOGRAPH COLLECTION - DAMAC HILLS

A

# 5BR+ SERIES

V27-S

A

AUTOGRAPH  
COLLECTION

AUTOGRAPH COLLECTION - DAMAC HILLS



REAR-FACING

A  
AUTOGRAPH  
COLLECTION

5BR+ SERIES  
V27-S

Saleable Area  
4,142.42 sqft  
Plot Area Range  
3,768 - 4,382 sqft

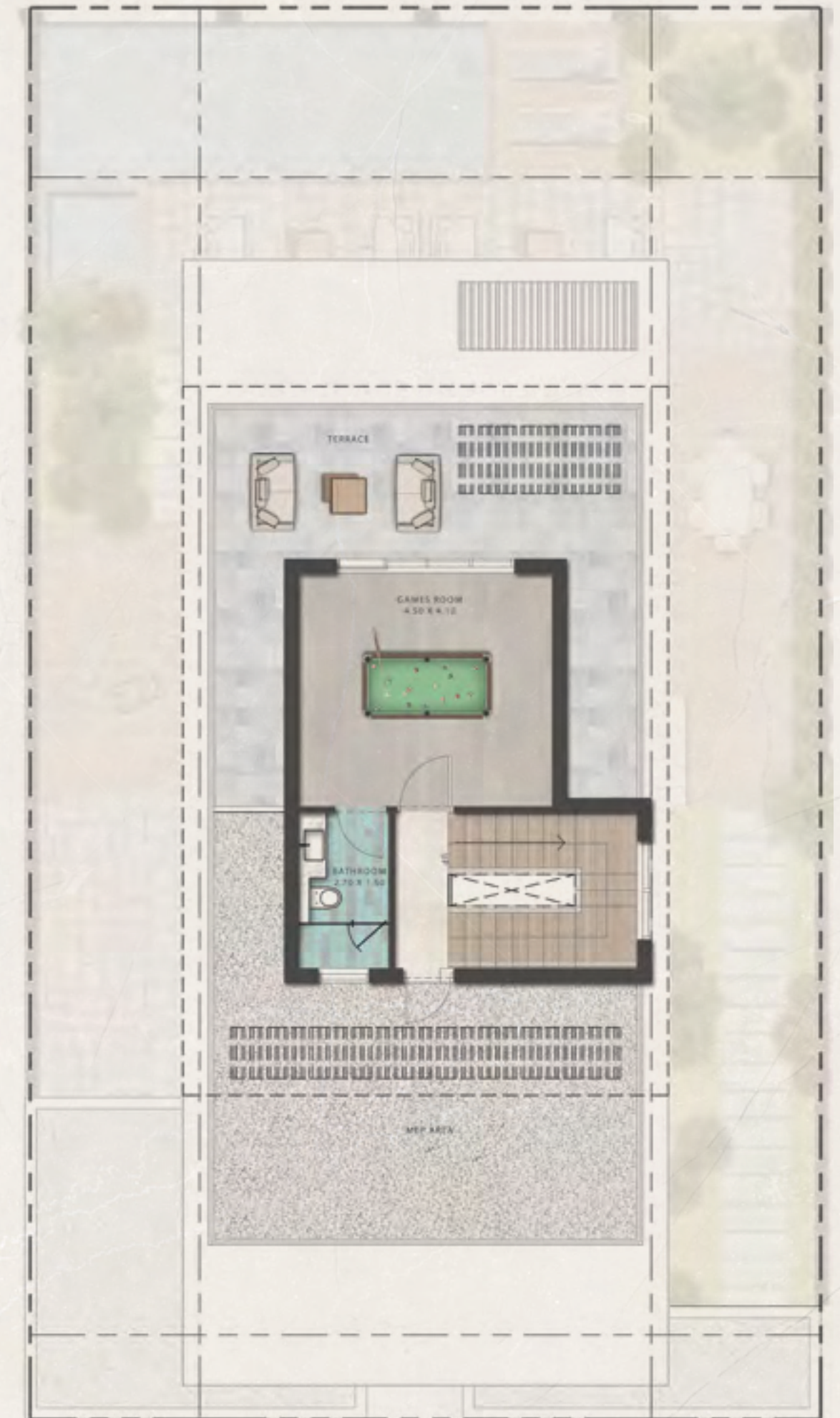
Clusters  
LONG VIEW | PHOENIX | TURF



GROUND FLOOR



FIRST FLOOR



ROOF FLOOR



# 5BR+ SERIES

2B222B

A  
AUTOGRAPH  
COLLECTION



FRONT-FACING

# 5BR+ SERIES

2B222B

A  
AUTOGRAPH  
COLLECTION



REAR-FACING

AUTOGRAPH COLLECTION - DAMAC HILLS



*A*  
AUTOGRAPH  
COLLECTION

**5BR+ SERIES**  
**2B222B**

Saleable Area  
**4,489.23 sqft**

Plot Area  
**4,116.12 sqft**

Cluster  
**PELHAM**



GROUND FLOOR



FIRST FLOOR



ROOF FLOOR

A

AUTOGRAPH

COLLECTION

DAMAC HILLS

---

TYOLOGY SERIES

4 BEDROOM

INTIMATE & INIMITABLE

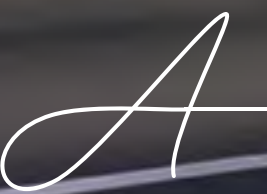
**4BR+ SERIES**  
**THH-PH, THH-PH (M)**

*A*  
**AUTOGRAPH**  
COLLECTION



FRONT-FACING

AUTOGRAPH COLLECTION - DAMAC HILLS



**4BR+ SERIES**  
**THH-PH, THH-PH (M)**

*A*  
**AUTOGRAPH**  
COLLECTION

AUTOGRAPH COLLECTION - DAMAC HILLS



REAR-FACING

*A*  
AUTOGRAPH  
COLLECTION

**4BR+ SERIES**  
THH-PH, THH-PH (M)

Saleable Area  
**3,511.73 sqft**

Plot Area  
**4,242.49 - 4,635.15 sqft**

Cluster  
**TURF**



GROUND FLOOR



FIRST FLOOR

# 4BR+ SERIES

V23-T

A  
AUTOGRAPH  
COLLECTION



FRONT-FACING





# 4BR+ SERIES

V23-T

A  
AUTOGRAPH  
COLLECTION



REAR-FACING

AUTOGRAPH COLLECTION - DAMAC HILLS



*A*  
**AUTOGRAPH**  
 COLLECTION

**4BR+ SERIES**  
**V23-T**

Saleable Area  
**2,918.95 sqft**

Plot Area  
**3,446.93 sqft**

Cluster  
**TOPANGA**



GROUND FLOOR



FIRST FLOOR



# DAMAC PROPERTIES

## LIVE THE LUXURY

DAMAC Properties has been at the forefront of the Middle East's luxury real estate market since 2002, delivering award-winning residential, commercial and leisure properties across the region and around the world, including the UAE, Saudi Arabia, Qatar, Jordan, Lebanon, Iraq, Maldives, Canada, United States and United Kingdom. Since then, the company has delivered approximately 46,000 homes, with a development portfolio of more than 33,000 at various stages of planning and progress.\*

Joining forces with some of the world's most eminent fashion and lifestyle brands, DAMAC has brought new and exciting living concepts to the market with collaborations that include a golf course managed by The Trump Organization, and luxury homes in association with Versace, de GRISOGONO, Cavalli, Just Cavalli, Paramount Hotels & Resorts, Rotana and the Radisson Hotel Group. With a consistent vision and strong momentum, DAMAC Properties is building the next generation of Middle Eastern luxury living.

DAMAC places a great emphasis on philanthropy and corporate social responsibility. The Hussain Sajwani – DAMAC Foundation (HSDF), a joint initiative between DAMAC Group and Hussain Sajwani, announced the launch of the 'Fresh Slate' initiative in collaboration with the Dubai Police General Headquarters, aimed at aiding detainees in Dubai's Punitive and Correctional Institutions who have been charged with petty offences.

The HSDF also pledged AED 5 million for the 1 Billion Meals initiative launched by Vice President and Prime Minister of the UAE, and Ruler of Dubai, His Highness Sheikh Mohammed bin Rashid Al Maktoum, at the start of Ramadan 2022, aimed at providing meals to underprivileged communities in 50 countries across the world.

DAMAC has also supported the vision of Sheikh Mohammed to train one million Arab coders in creating an empowered society through learning and skills development, an initiative that successfully wrapped up in May 2022.

\*As of 30th June 2023.

# LUXURY BY APPOINTMENT

CONTACT US AT ANY OF OUR OFFICES OR VISIT [DAMACPROPERTIES.COM](https://damacproperties.com)

## UNITED ARAB EMIRATES

Dubai  
Tel: 800-DAMAC (800-32622)  
E-mail: [dubai@damacgroup.com](mailto:dubai@damacgroup.com)

Park Towers – Sales Centre  
Dubai International Financial Centre

AYKON City – Sales Centre  
Floor 63, Sheikh Zayed Road

DAMAC Hills – Sales Centre  
Golf Veduta, Townhouse TH2

DAMAC Hills – Sales Centre  
Bellavista (Carson Building)

DAMAC Hills 2 – Sales Centre  
Amazonia Cluster, Villa 333

DAMAC Hills 2 – Sales Centre  
Water Town

## QATAR

Building 90, New Solta Area  
Ali bin Abi Talib Street  
Next to Omar bin Al Khattab  
Health Centre  
Tel: +974 44 666 986  
Fax: +974 44 554 576  
E-mail: [doha@damacgroup.com](mailto:doha@damacgroup.com)

## KINGDOM OF SAUDI ARABIA

DAMAC Towers Riyadh  
South Tower  
Olaya District  
King Fahd Road  
PO Box 102460  
Tel: +966 11 835 0300  
E-mail: [ksa@damacgroup.com](mailto:ksa@damacgroup.com)

## TURKEY

Levazım, Mah. Koru Sk.  
Zorlu Centre No. 2  
IC Kapi No. 347, Beşiktaş/İstanbul  
Turkey  
Tel: +90 212 892 0327  
Fax: +90 212 890 7184  
E-mail: [turkey.office@damacgroup.com](mailto:turkey.office@damacgroup.com)

## LEBANON

Unit 1801, 18th Floor  
DAMAC Tower  
Omar Daouk Street  
Mina El Hosn, Beirut Central District  
Tel: +961 81 647 200  
E-mail: [beirut@damacgroup.com](mailto:beirut@damacgroup.com)

## JORDAN

Opposite Abdali Mall Gate #1  
Al Istithmar Street  
Abdali Project, Amman  
Tel: +962 6 510 7000  
Fax: +962 6 565 7896  
E-mail: [amman@damacgroup.com](mailto:amman@damacgroup.com)

## UNITED KINGDOM

DAMAC Tower  
63-71 Bondway London SW8 1SQ  
Tel: +44 (0) 207 590 8050  
[damactower.co.uk](https://damactower.co.uk)

## CHINA | SHANGHAI

Building Name: 3 Corporate Avenue  
Address: 168, Hubin Road, Huangpu District,  
Shanghai 25F, units 2510-2511



***DAMAC***