



**MEADOW  
HEIGHTS**  
PORT COLBORNE



**ELEVATION C**

Actual usable floor space may vary from the stated floor area. Plans and elevations are artist's renderings and may contain options which are not standard on all models. Dunsire Homes Inc reserves the right to make changes to these floorplans, specifications, dimensions and elevations without prior notice and without compensation. Stated dimensions and square footages are approximate and should not be used as representation of the home's usable floor space or actual size. Any square footage of a single-family home or a multi-family home that is stated herein is approximate only, may vary from time to time, and remains subject to change without notice or compensation.

# ASPEN



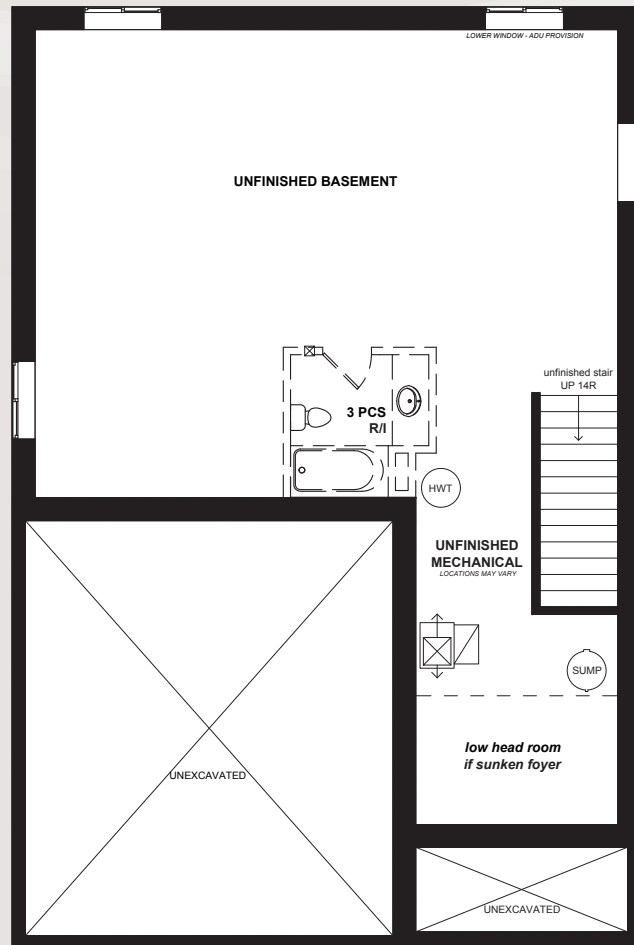
**ELEVATION A**



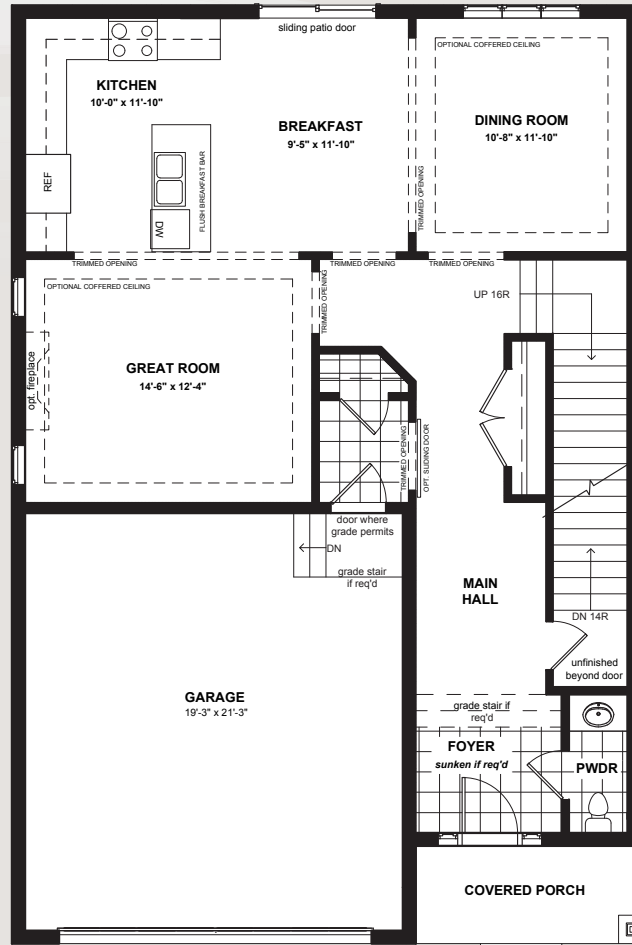
**ELEVATION B**

 **DUNSIRE** | EST. 2010  
DEVELOPMENTS

[www.Dunsire.com](http://www.Dunsire.com)

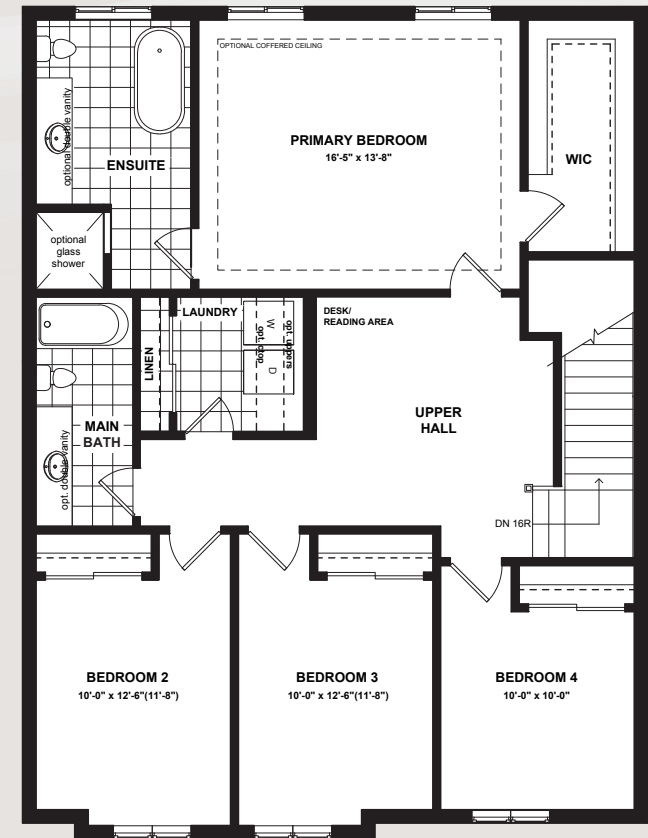


UNFINISHED BASEMENT



MAIN FLOOR

1,026 SQ.FT



SECOND FLOOR

1,365 SQ.FT



ASPEN

4 Bedrooms

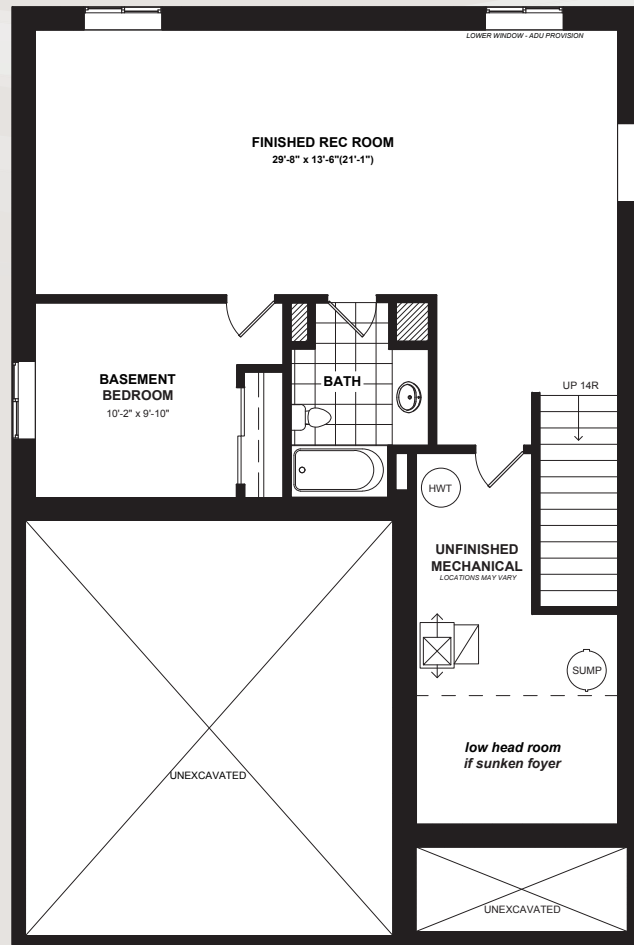
2.5 Bathrooms

2,391 Sq.Ft.



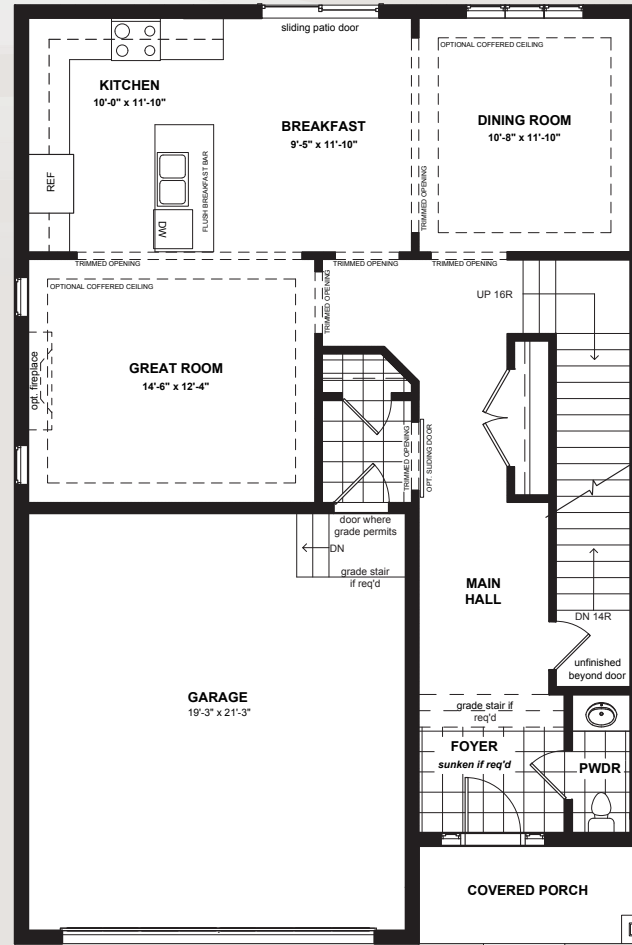
www.Dunsire.com

Actual usable floor space may vary from the stated floor area. Plans and elevations are artist's renderings and may contain options which are not standard on all models. Dunsire Homes Inc reserves the right to make changes to these floorplans, specifications, dimensions and elevations without prior notice and without compensation. Stated dimensions and square footages are approximate and should not be used as representation of the home's usable floor space or actual size. Any square footage of a single-family home or a multi-family home that is stated herein is approximate only, may vary from time to time, and remains subject to change without notice or compensation.



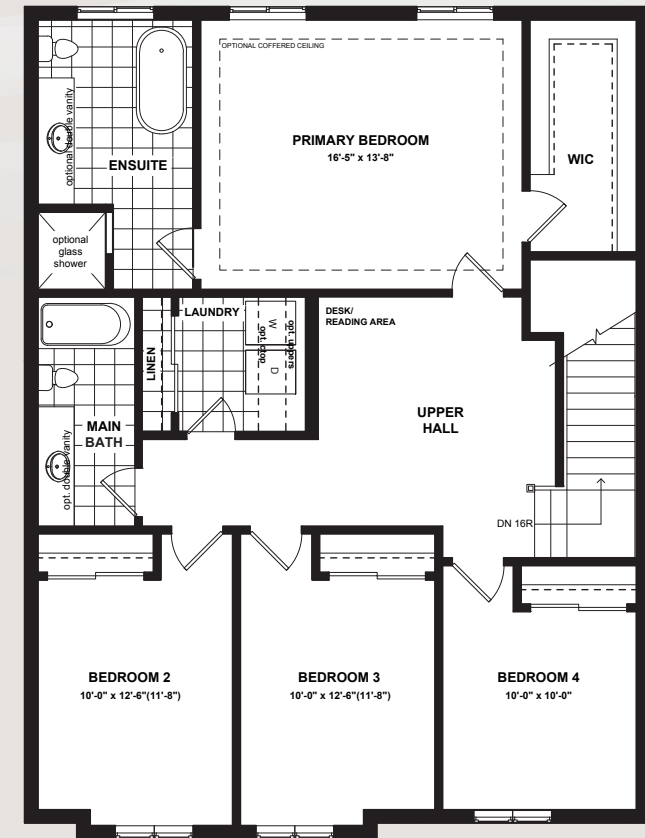
FINISHED BASEMENT

1,076 SQ.FT



MAIN FLOOR

1,026 SQ.FT



SECOND FLOOR

1,365 SQ.FT



# ASPEN

  
5 Bedrooms  
(4+1)

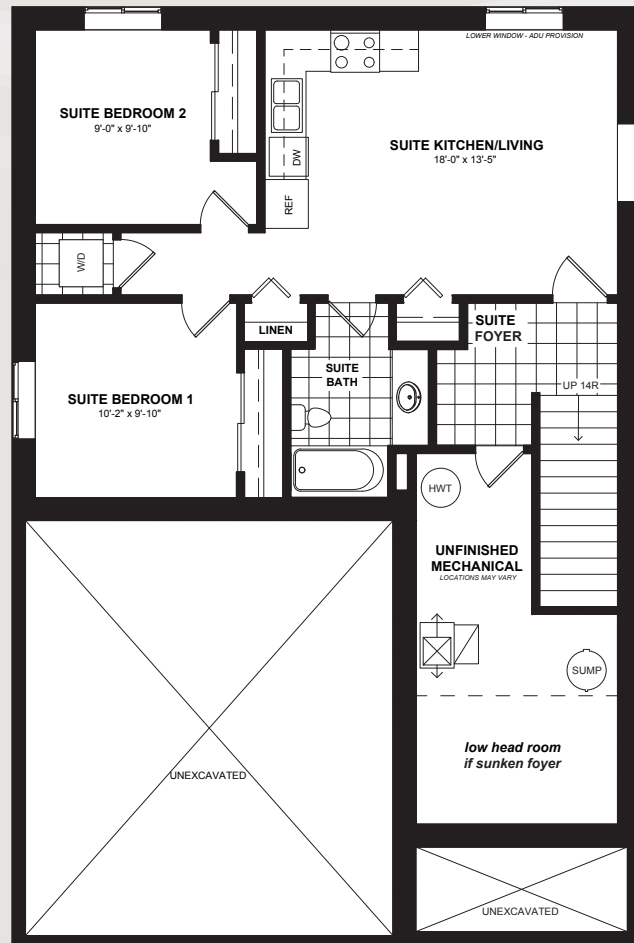
  
3.5 Bathrooms  
(2.5+1)

  
3,467 Sq.Ft.  
(2391+1076)

Actual usable floor space may vary from the stated floor area. Plans and elevations are artist's renderings and may contain options which are not standard on all models. Dunsire Homes Inc reserves the right to make changes to these floorplans, specifications, dimensions and elevations without prior notice and without compensation. Stated dimensions and square footages are approximate and should not be used as representation of the home's usable floor space or actual size. Any square footage of a single-family home or a multi-family home that is stated herein is approximate only, may vary from time to time, and remains subject to change without notice or compensation.

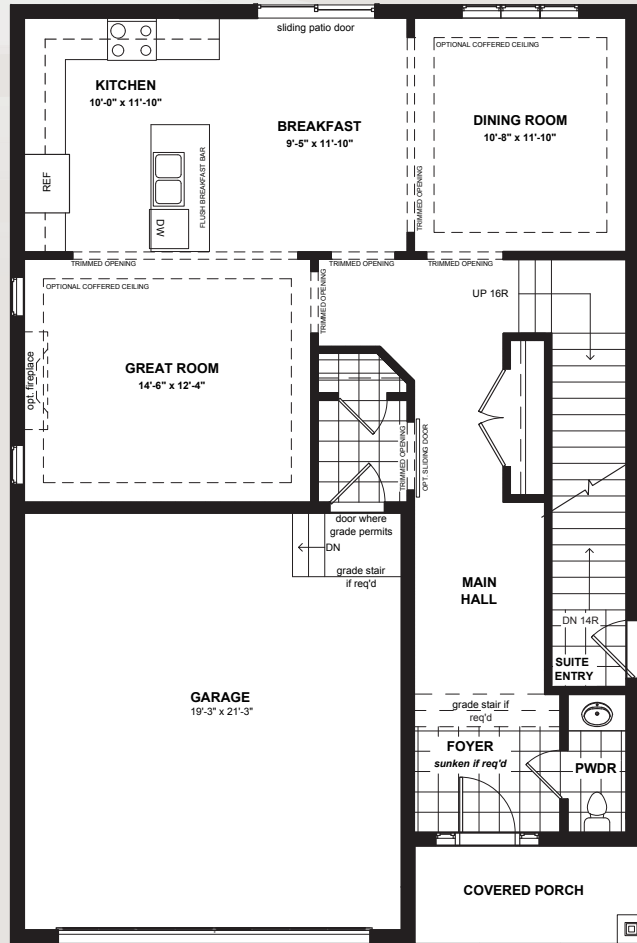


[www.Dunsire.com](http://www.Dunsire.com)



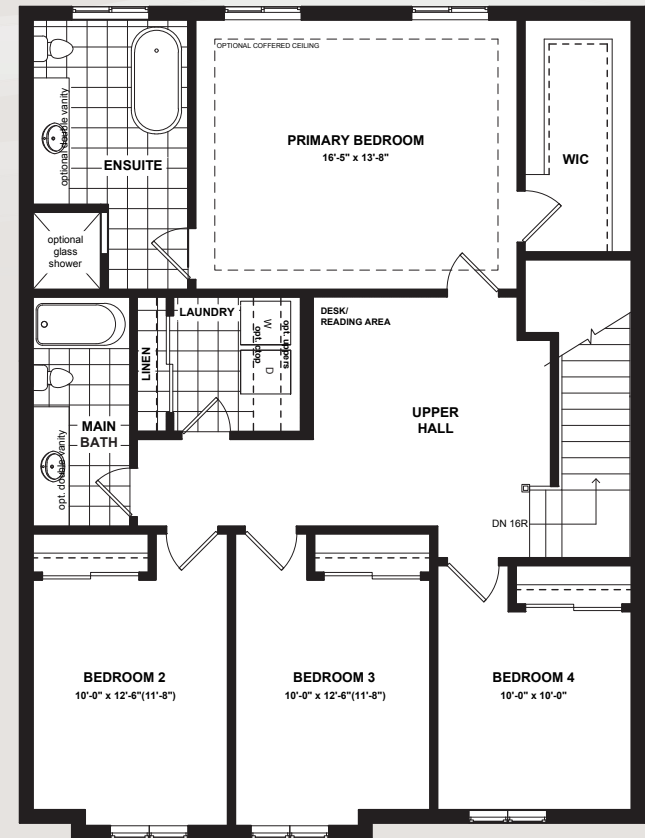
SECONDARY SUITE

1,076 SQ.FT



MAIN FLOOR

1,026 SQ.FT



SECOND FLOOR

1,365 SQ.FT



# ASPEN

6 Bedrooms  
(4+2)

3.5 Bathrooms  
(2.5+1)

3,467 Sq.Ft.  
(2391+1076)

Actual usable floor space may vary from the stated floor area. Plans and elevations are artist's renderings and may contain options which are not standard on all models. Dunsire Homes Inc reserves the right to make changes to these floorplans, specifications, dimensions and elevations without prior notice and without compensation. Stated dimensions and square footages are approximate and should not be used as representation of the home's usable floor space or actual size. Any square footage of a single-family home or a multi-family home that is stated herein is approximate only, may vary from time to time, and remains subject to change without notice or compensation.



[www.Dunsire.com](http://www.Dunsire.com)