

the morraine

4 BEDROOM + 3.5 BATH

Elevation A - 2,170 sq. ft.

Elevation B - 2,180 sq. ft.

Elevation C - 2,170 sq. ft.

BA38-9



Elevation B - 2,180 sq. ft.



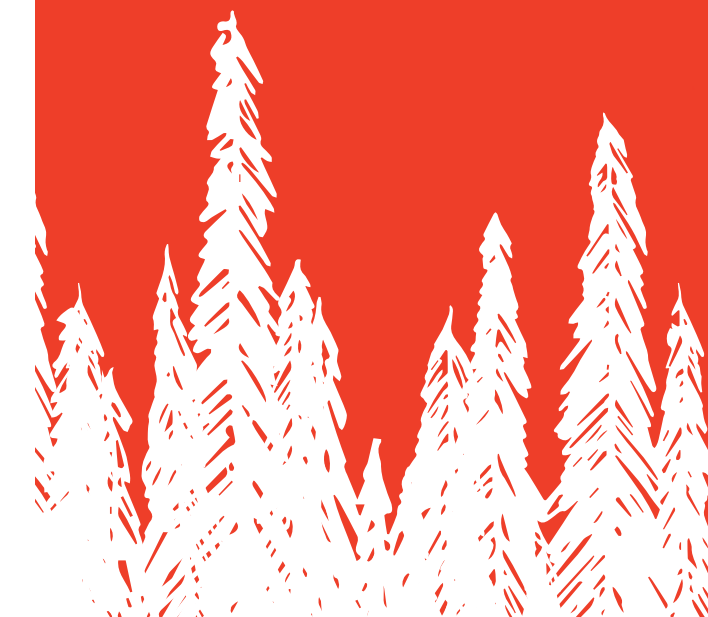
Elevation C - 2,170 sq. ft.



Elevation A - 2,170 sq. ft.



38' singles



the morraine

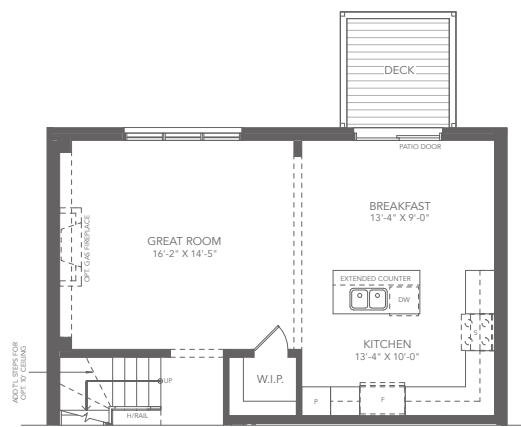
**4 BEDROOM
+ 3.5 BATH**

Elevation A - 2,170 sq. ft.

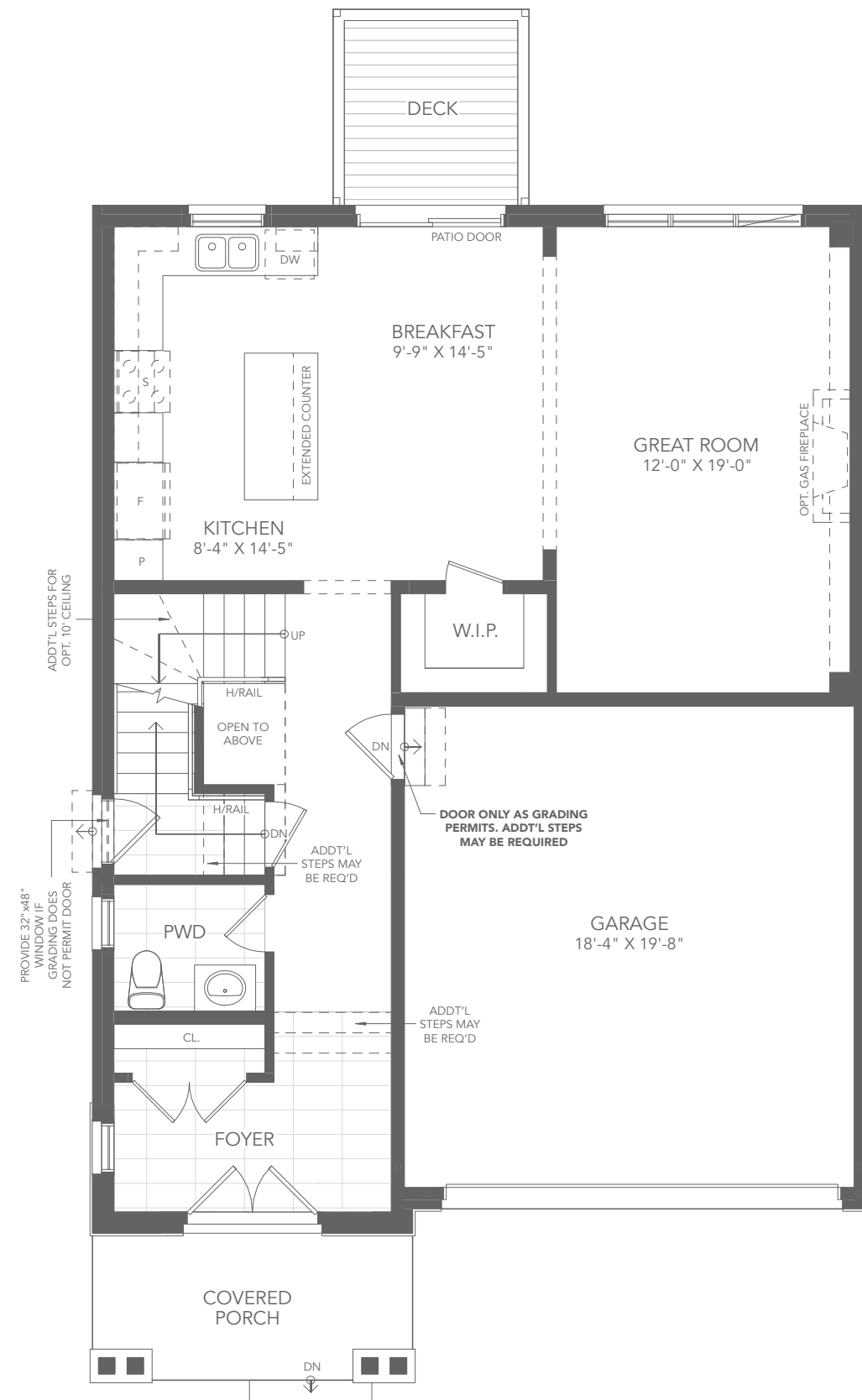
Elevation B - 2,180 sq. ft.

Elevation C - 2,170 sq. ft.

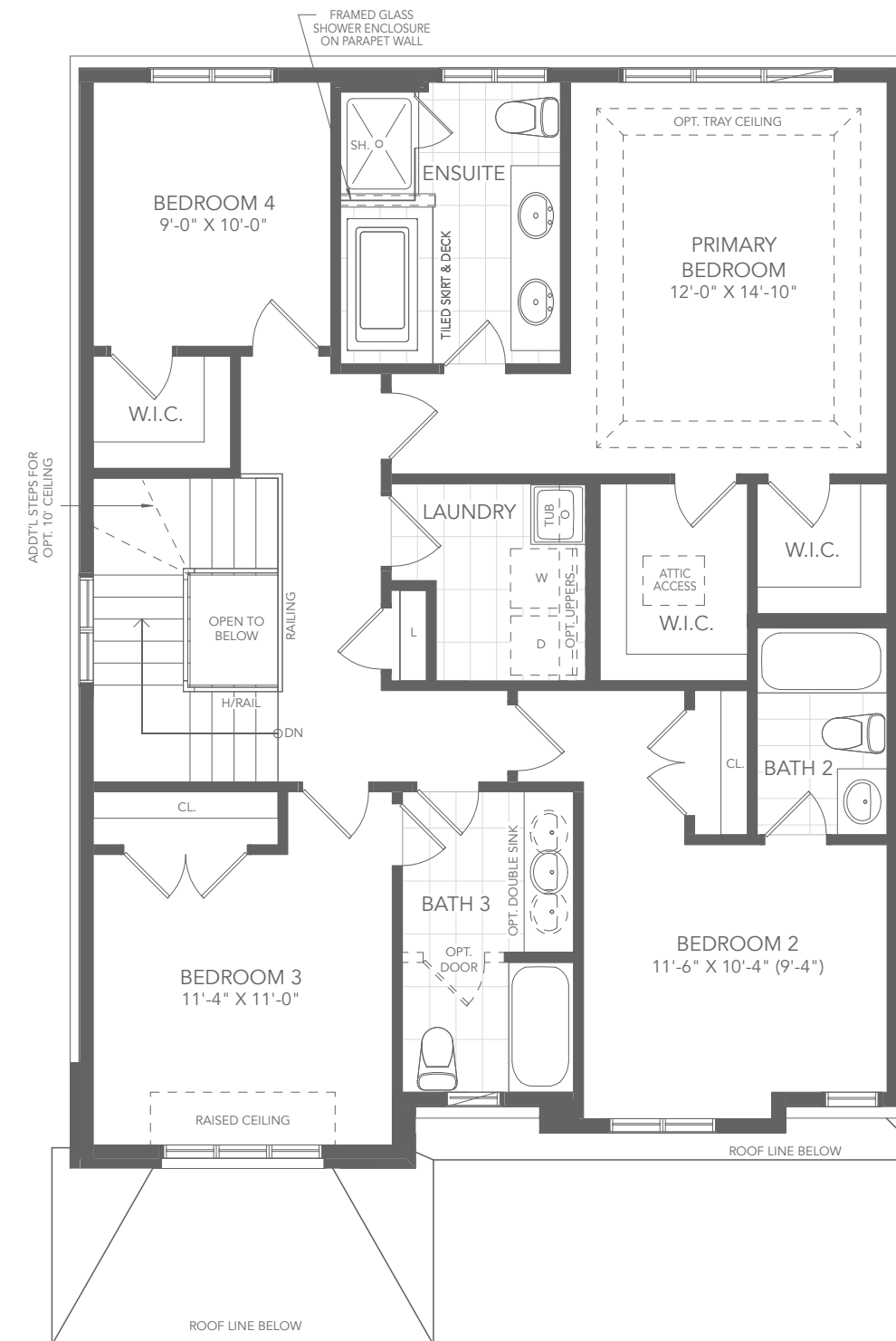
BA38-9



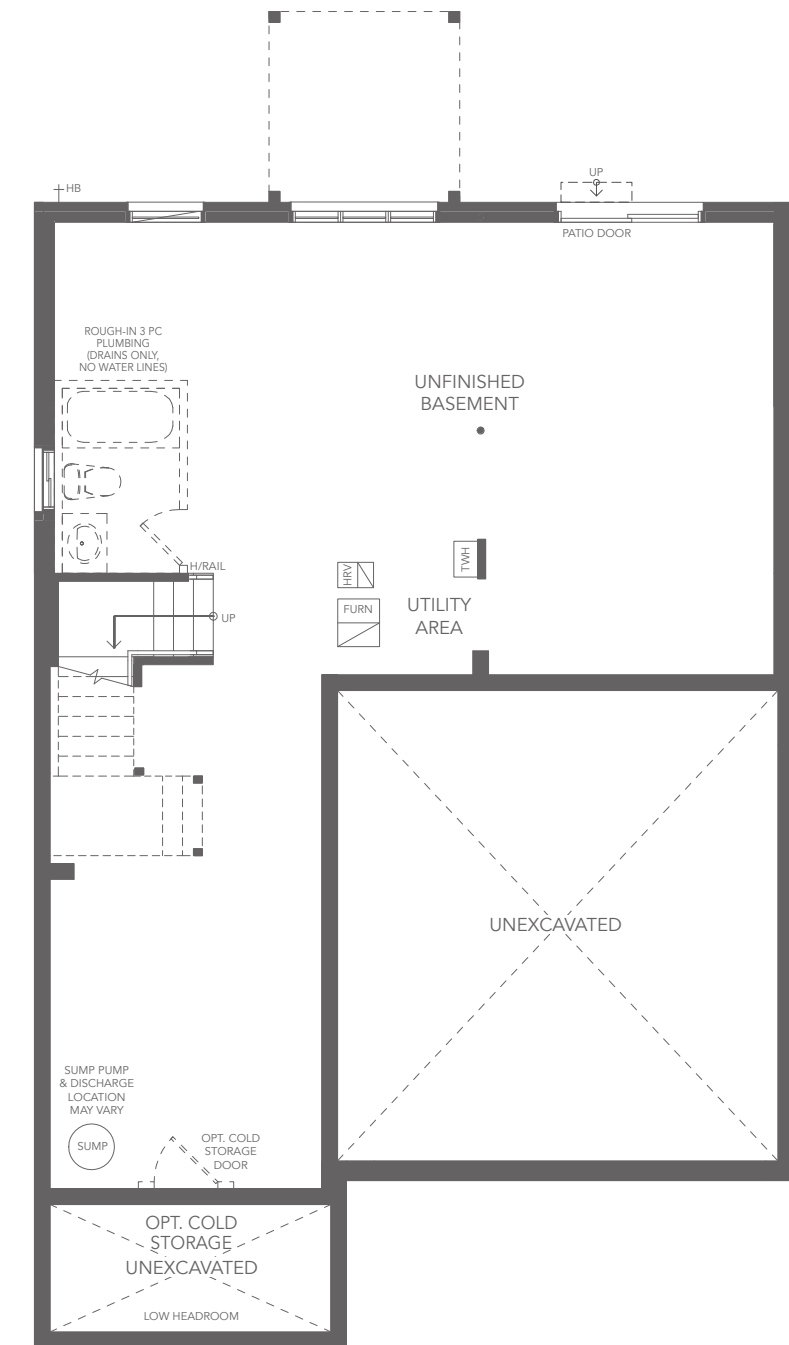
PARTIAL GROUND FLOOR PLAN
OPT. GREAT ROOM & KITCHEN



GROUND FLOOR PLAN A



SECOND FLOOR PLAN A



BASEMENT PLAN A

38' singles

the morraine

**5 BEDROOM
+ 4.5 BATH**

Elevation A - 2,790 sq. ft.

Elevation B - 2,800 sq. ft.

Elevation C - 2,790 sq. ft.

All elevations include 620 sq. ft. of finished basement area

BA38-9



Elevation A - 2,790 sq. ft.



Elevation B - 2,800 sq. ft.



Elevation C - 2,790 sq. ft.

fullhouse
EDITION

TERRA
A GREAT GULF COMMUNITY IN BARRIE

38' singles

 **GREAT GULF**

the morraine

5 BEDROOM + 4.5 BATH

Elevation A - 2,790 sq. ft.

Elevation B - 2,800 sq. ft.

Elevation C - 2,790 sq. ft.

All elevations include 620 sq. ft. of finished basement area

BA38-9

fullhouse
EDITION

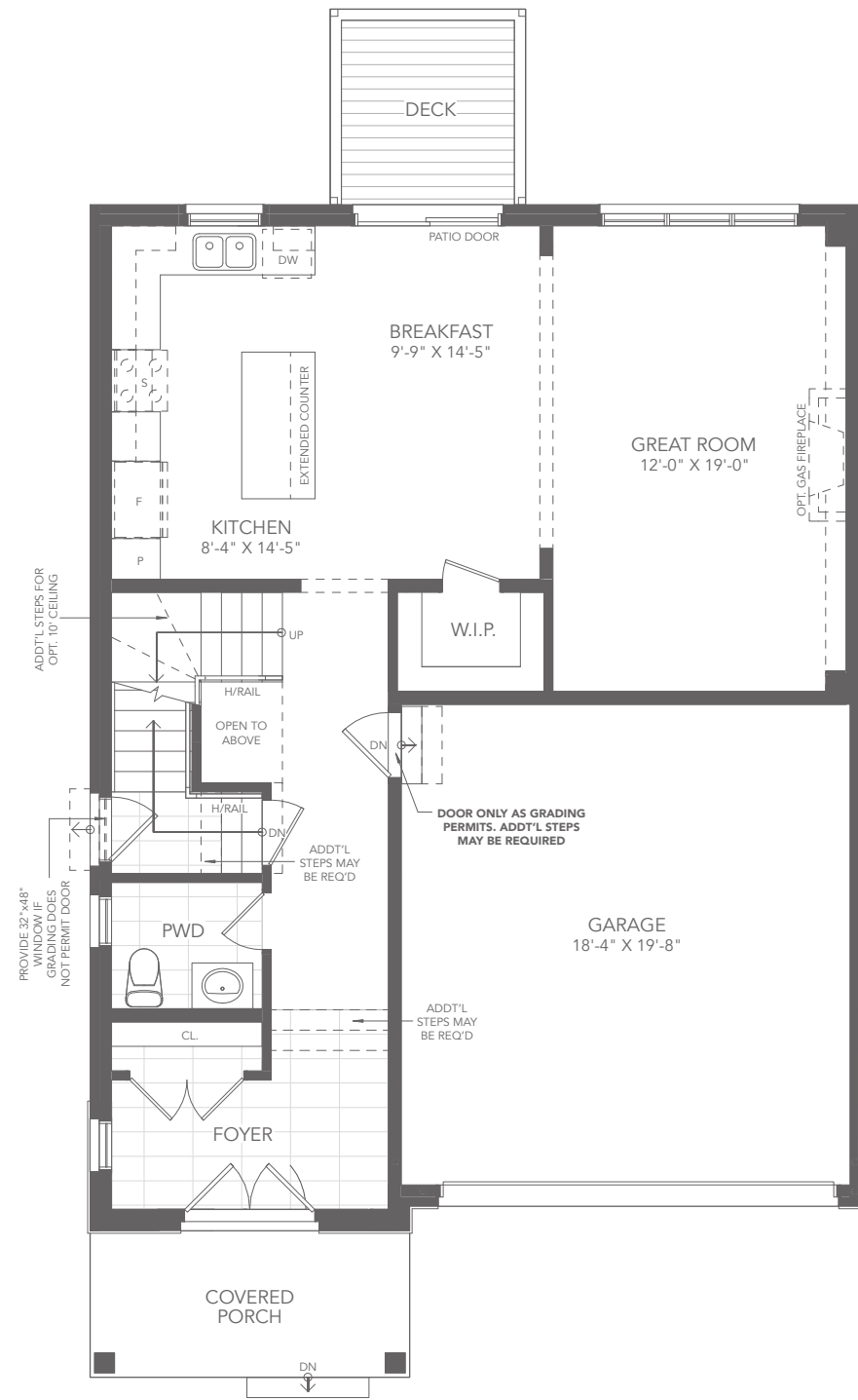
As part of Great Gulf's commitment to always deliver greater value, we bring you our new, exclusive and unprecedented collection of homes.

YOUR FULL HOUSE INCLUDES:

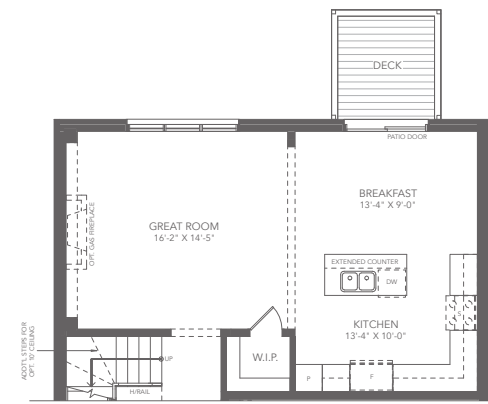
Finished basement with:

- Additional 5th bedroom
- Additional full bathroom
- Larger basement windows
- Full underslab insulation
- Main floor side door entry*

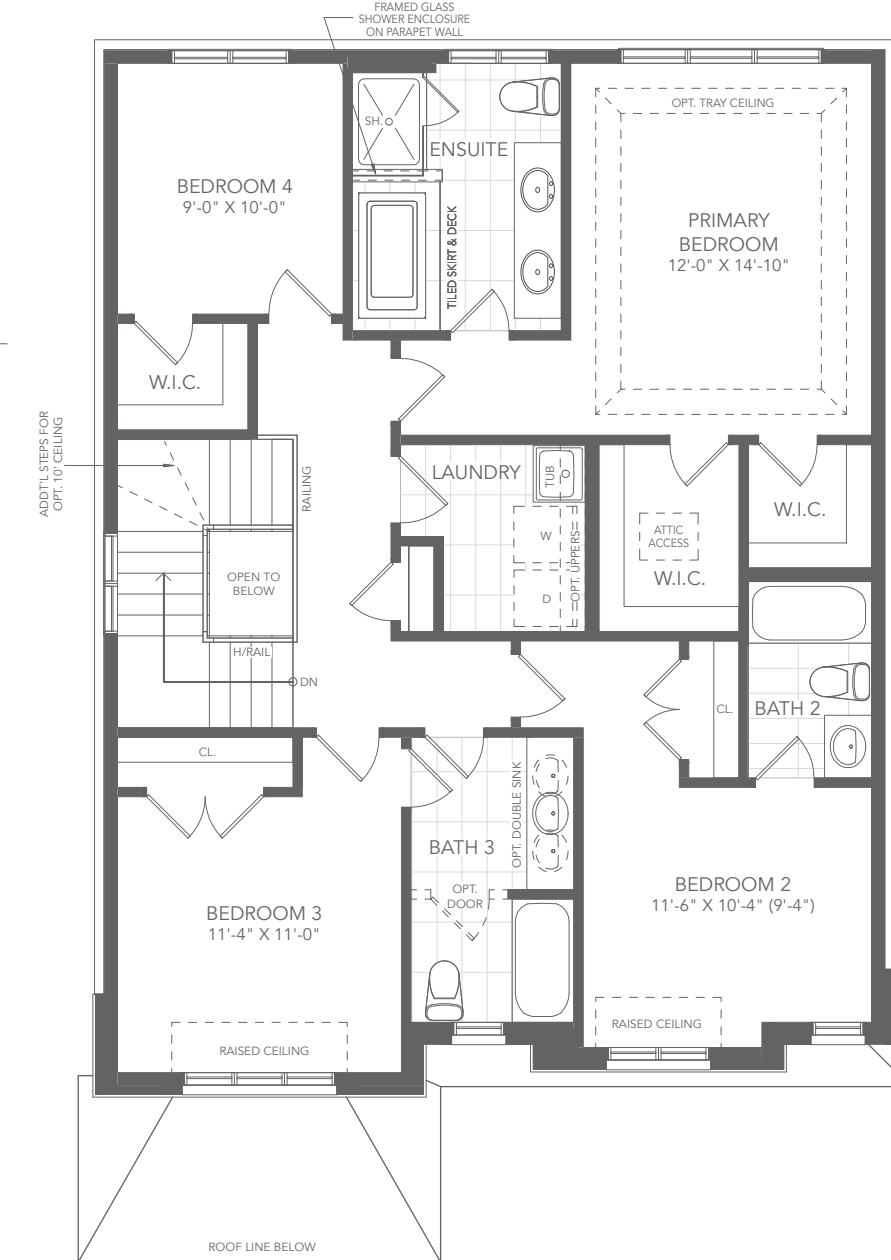
*As grading permits. E. & OE.



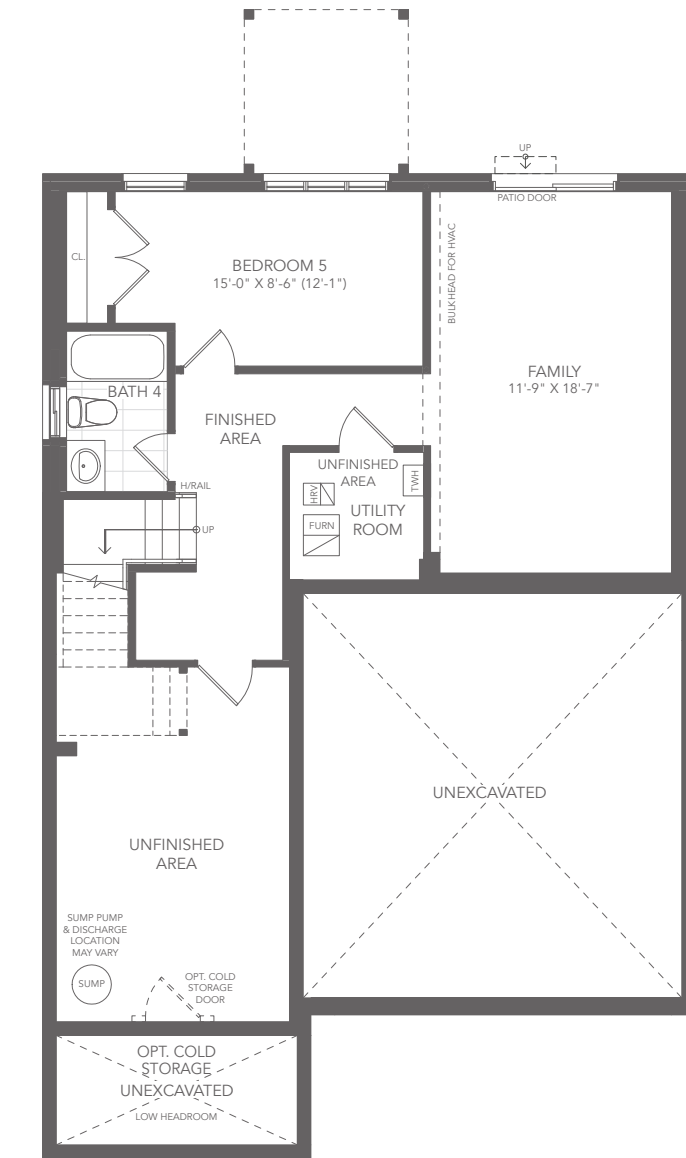
GROUND FLOOR PLAN B



PARTIAL GROUND FLOOR PLAN
OPT. GREAT ROOM & KITCHEN



SECOND FLOOR PLAN B



BASEMENT PLAN B

the redstone

4 BEDROOM + 3.5 BATH

Elevation A - 2,445 sq. ft.

Elevation B - 2,440 sq. ft.

Elevation C - 2,435 sq. ft.

BA38-10



Elevation B - 2,440 sq. ft.



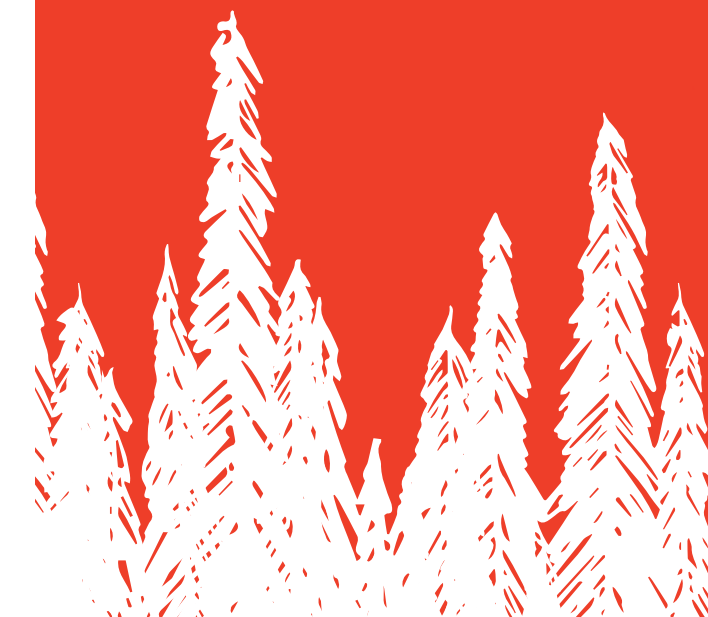
Elevation C - 2,435 sq. ft.



Elevation A - 2,445 sq. ft.



38' singles



the redstone

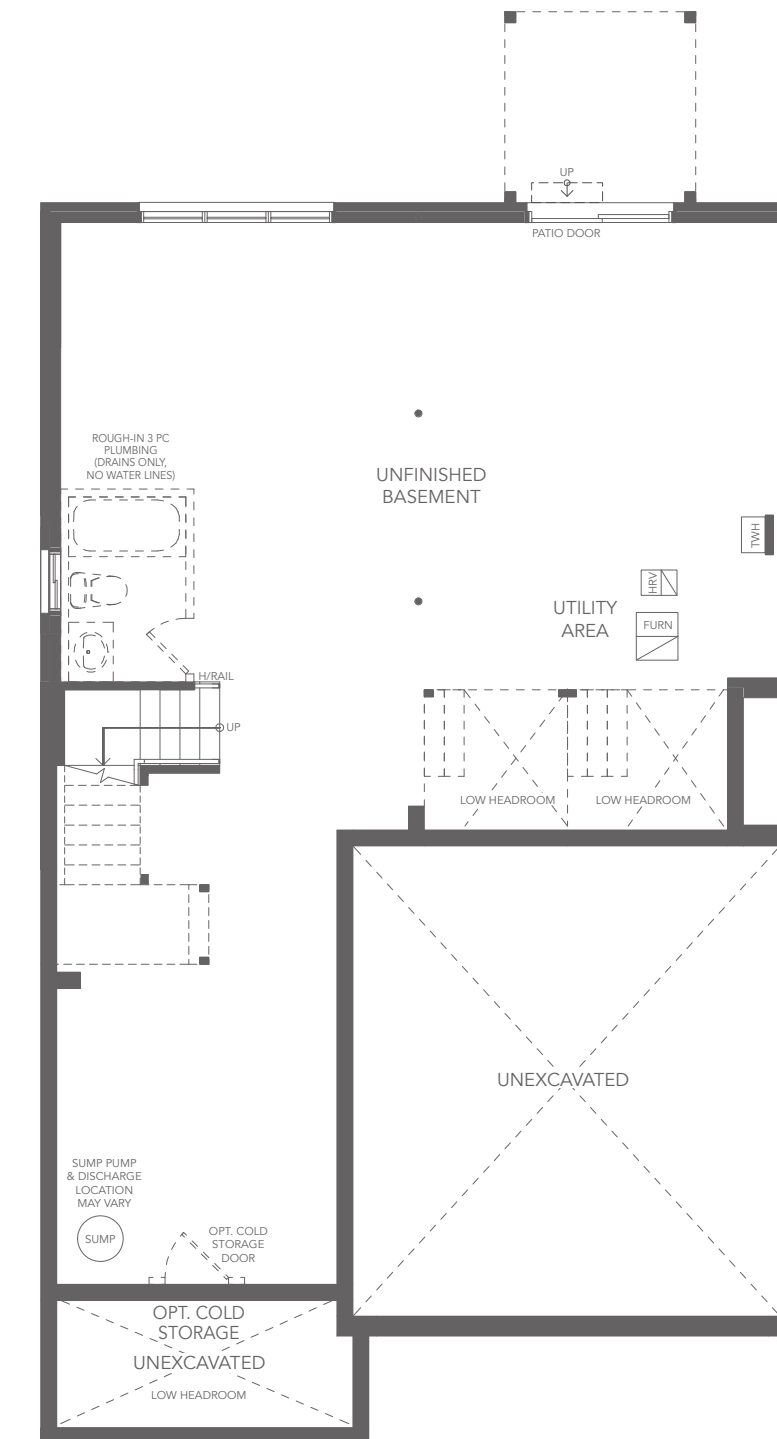
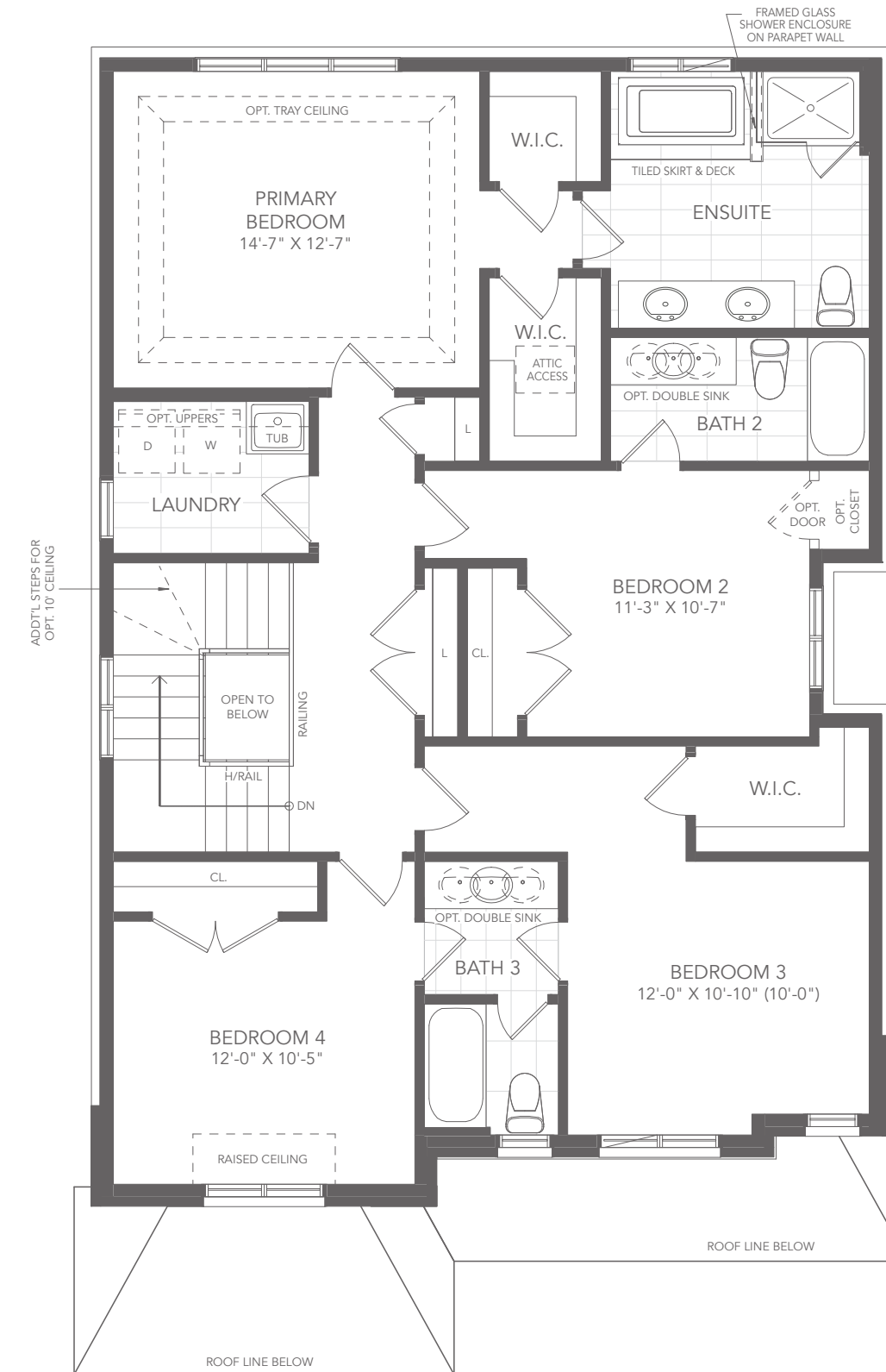
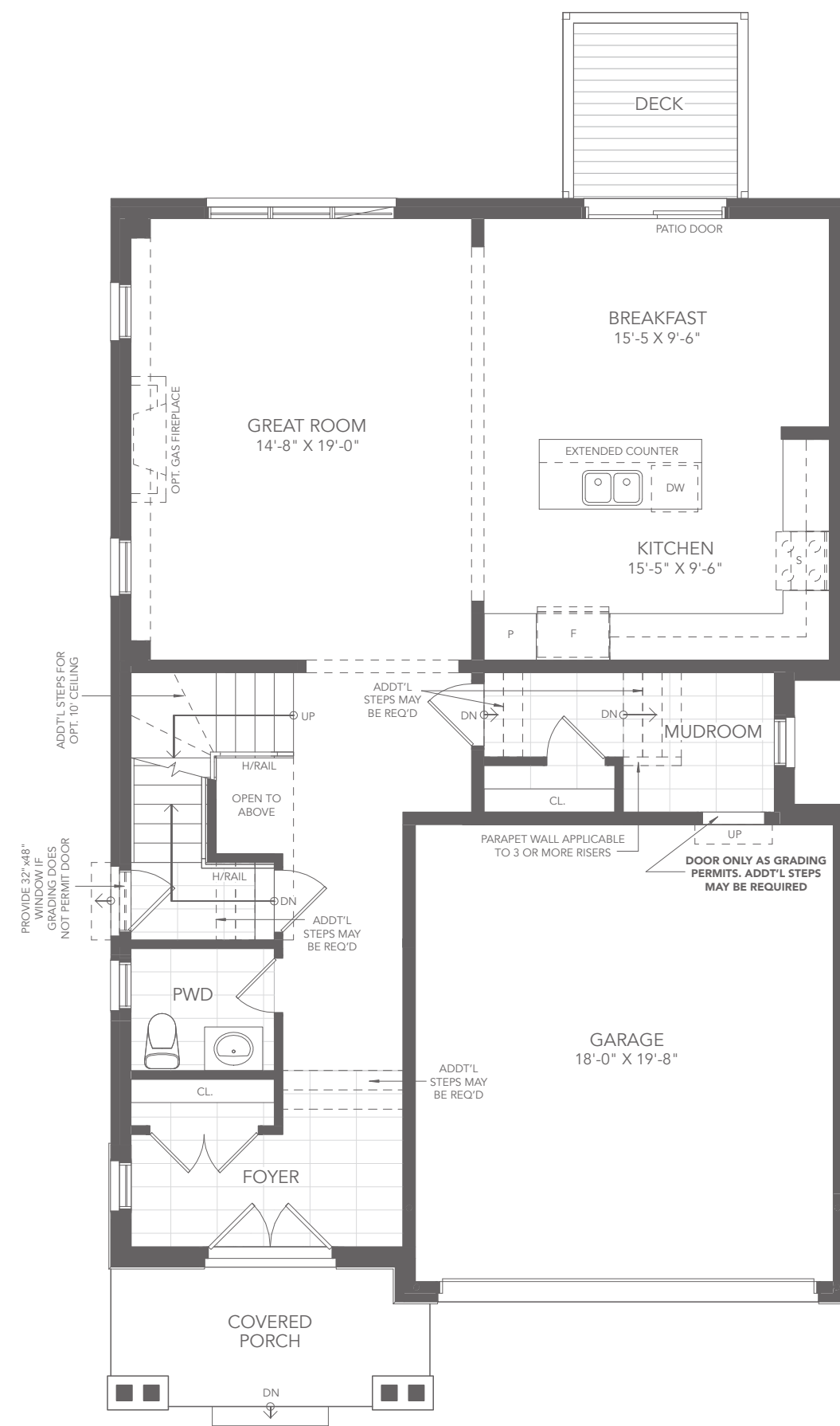
4 BEDROOM + 3.5 BATH

Elevation A - 2,445 sq. ft.

Elevation B - 2,440 sq. ft.

Elevation C - 2,435 sq. ft.

BA38-10



38' singles

the redstone

**5 BEDROOM
+ 4.5 BATH**

Elevation A - 3,095 sq. ft.

Elevation B - 3,090 sq. ft.

Elevation C - 3,085 sq. ft.

All elevations include 650 sq. ft. of finished basement area

BA38-10



Elevation A - 3,095 sq. ft.



Elevation B - 3,090 sq. ft.



Elevation C - 3,085 sq. ft.

fullhouse
EDITION

TERRA
A GREAT GULF COMMUNITY IN BARRIE

38' singles

 **GREAT GULF**

the redstone

5 BEDROOM + 4.5 BATH

Elevation A - 3,095 sq. ft.

Elevation B - 3,090 sq. ft.

Elevation C - 3,085 sq. ft.

All elevations include 650 sq. ft. of finished basement area

BA38-10

fullhouse
EDITION

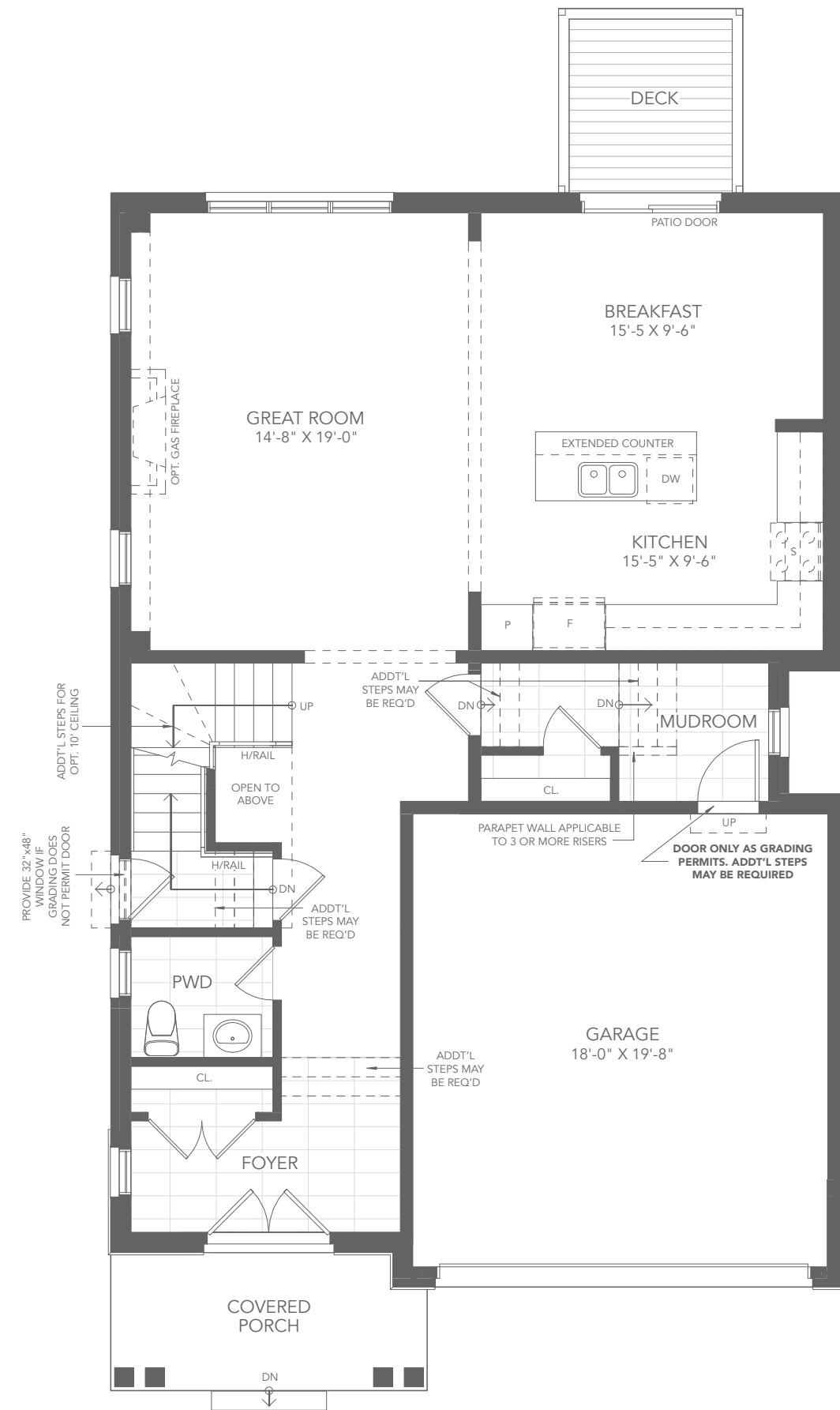
As part of Great Gulf's commitment to always deliver greater value, we bring you our new, exclusive and unprecedented collection of homes.

YOUR FULL HOUSE INCLUDES:

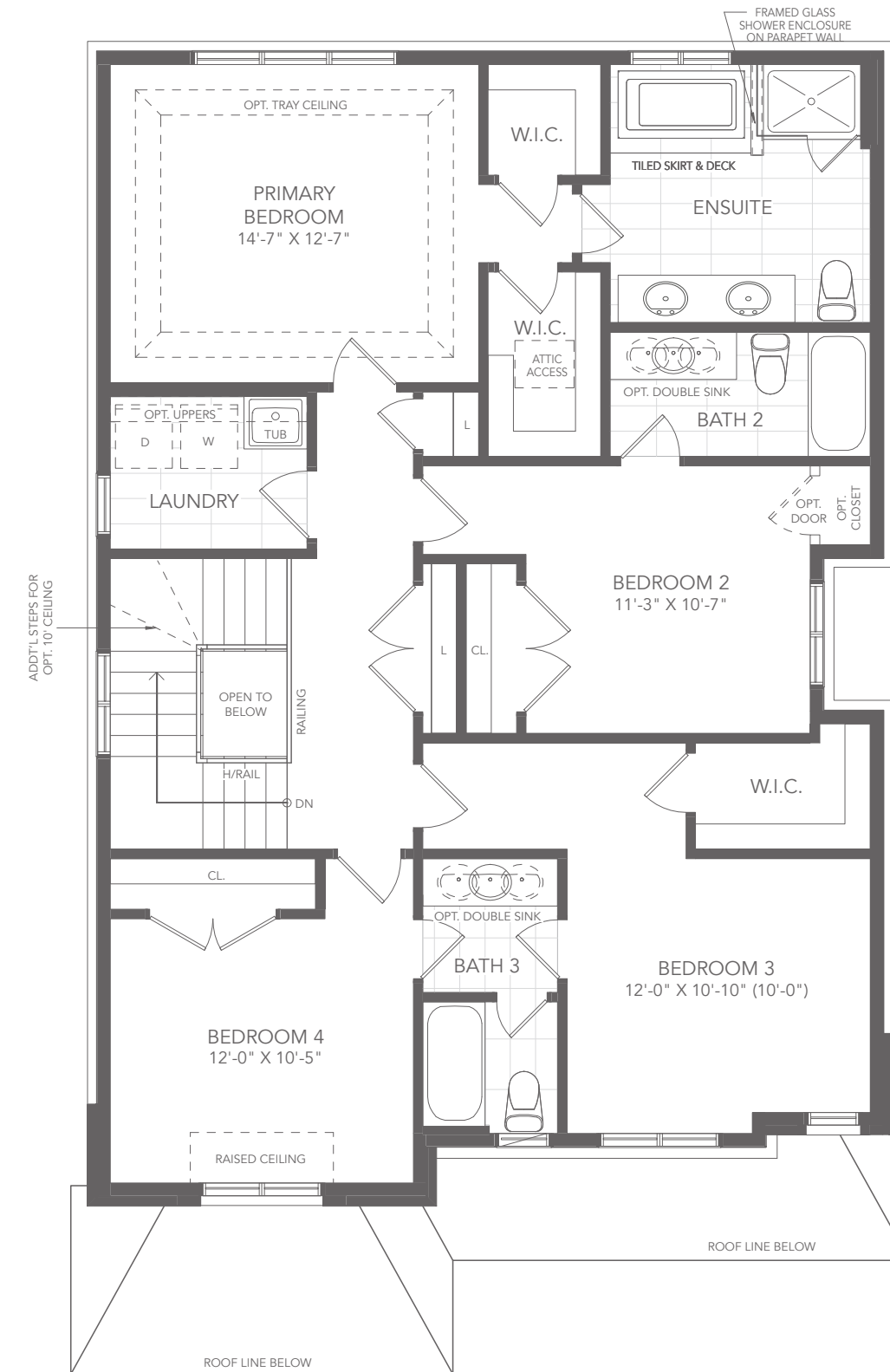
Finished basement with:

- Additional 5th bedroom
- Additional full bathroom
- Larger basement windows
- Full underslab insulation
- Main floor side door entry*

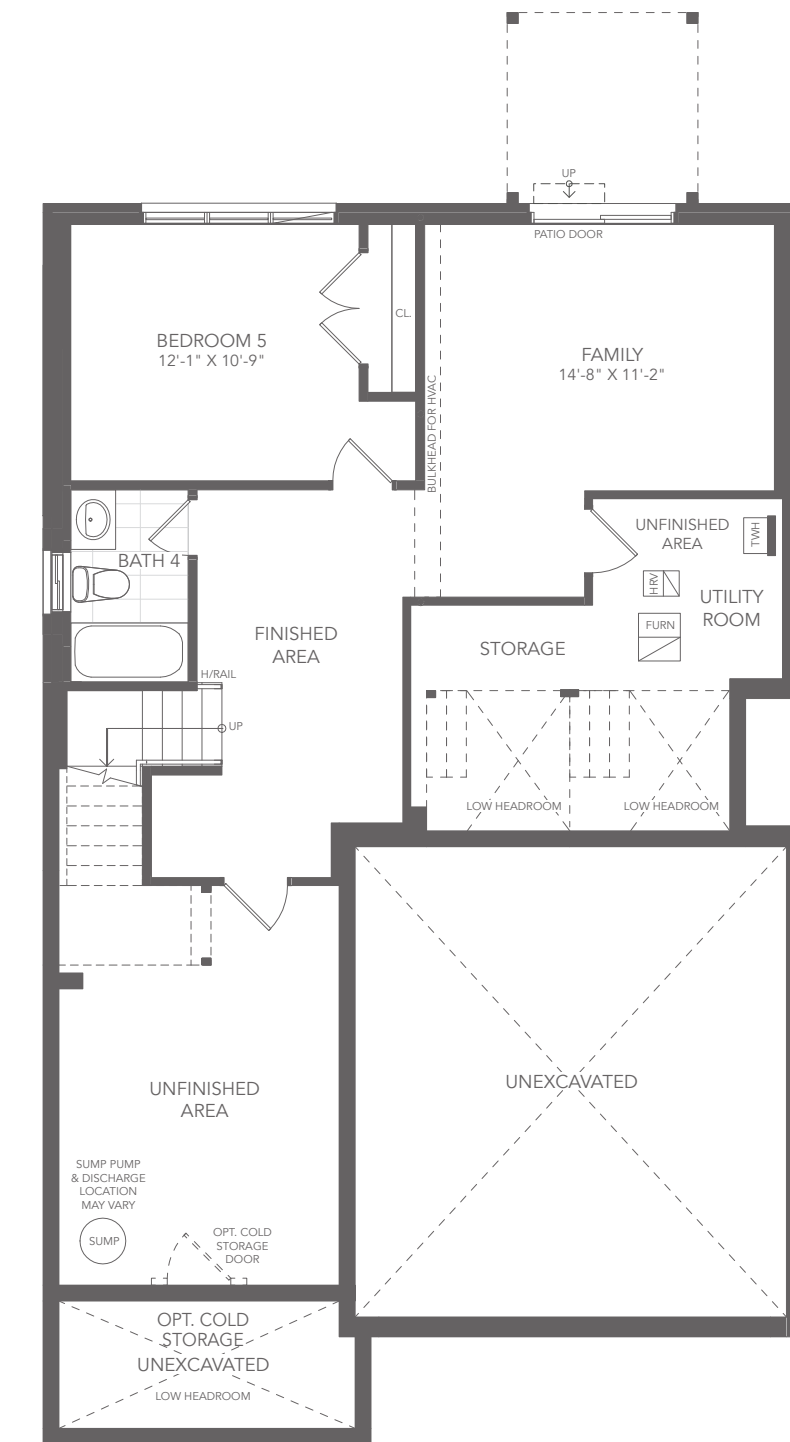
*As grading permits. E. & OE.



GROUND FLOOR PLAN B



SECOND FLOOR PLAN B



BASEMENT PLAN B

38' singles

the florence

4 BEDROOM + 3.5 BATH

Elevation B - 2,615 sq. ft.

Elevation C - 2,610 sq. ft.

BA38-12



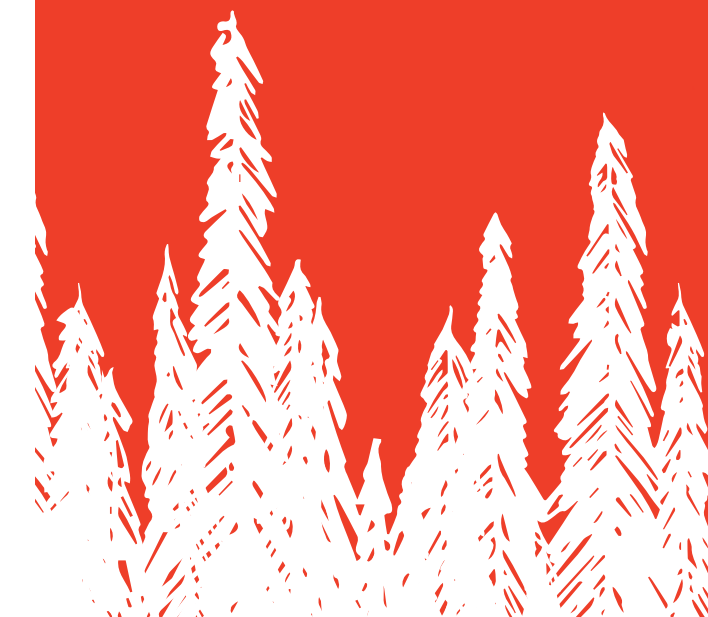
Elevation B - 2,615 sq. ft.



Elevation C - 2,610 sq. ft.



38' singles



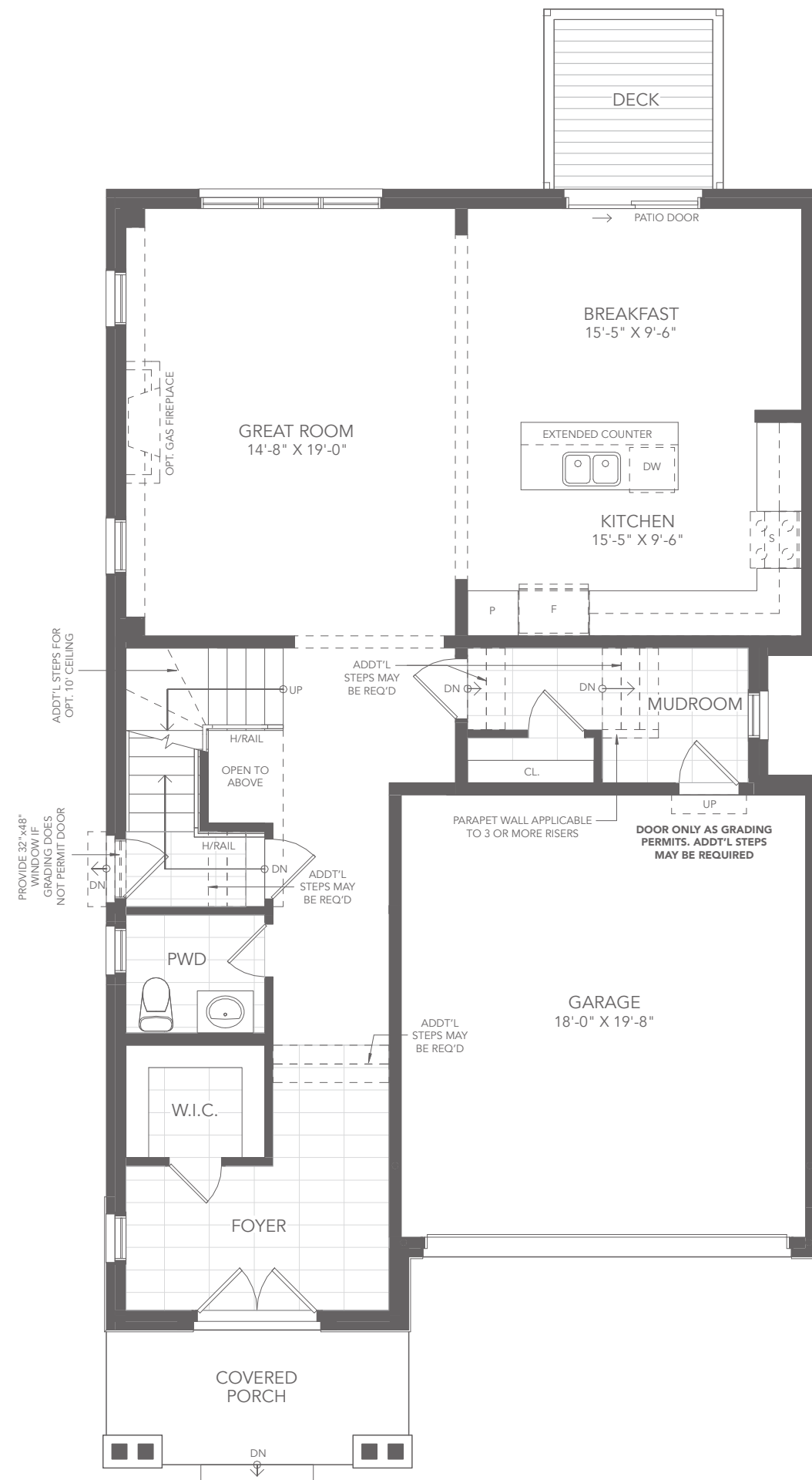
the florence

**4 BEDROOM
+ 3.5 BATH**

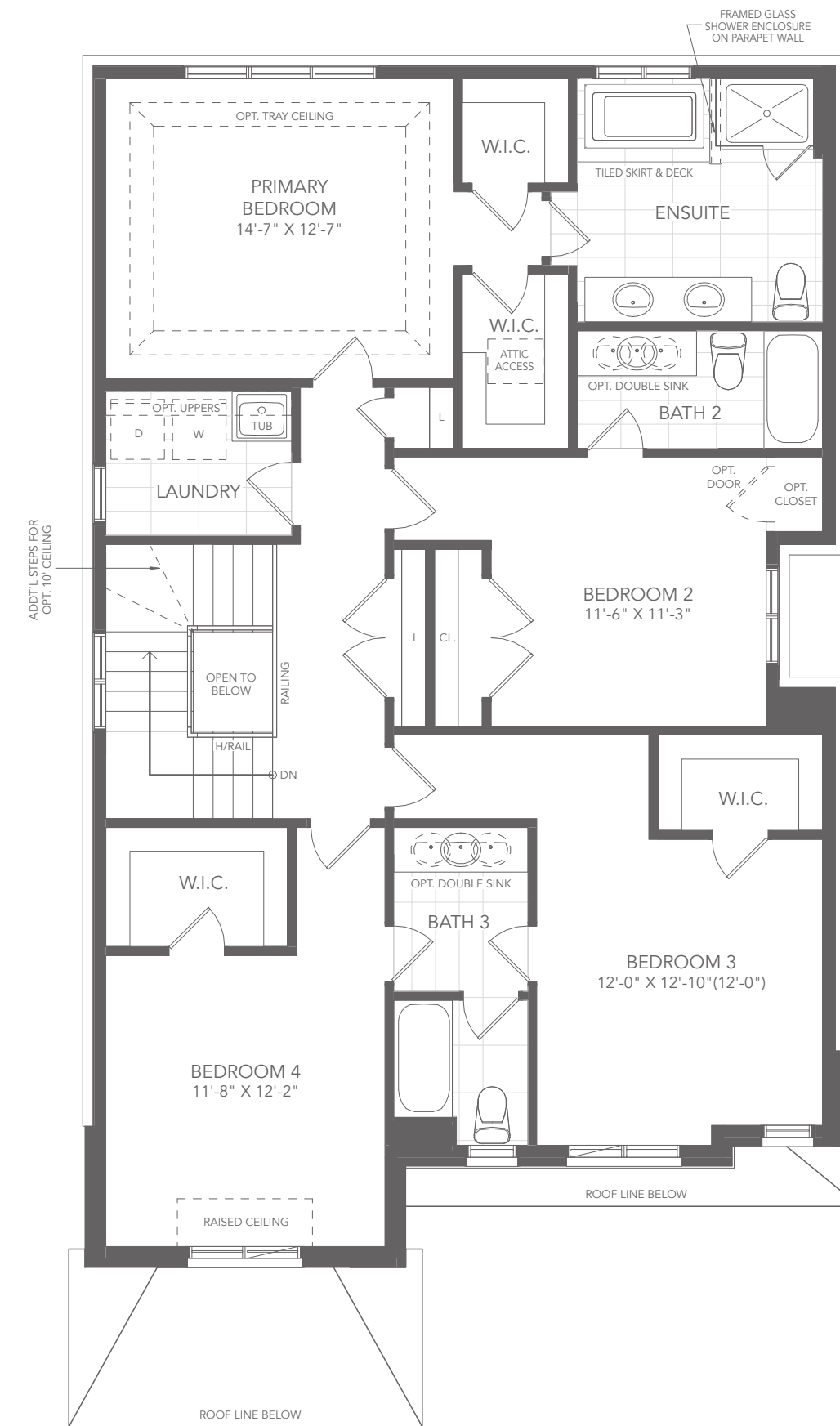
Elevation B - 2,615 sq. ft.

Elevation C - 2,610 sq. ft.

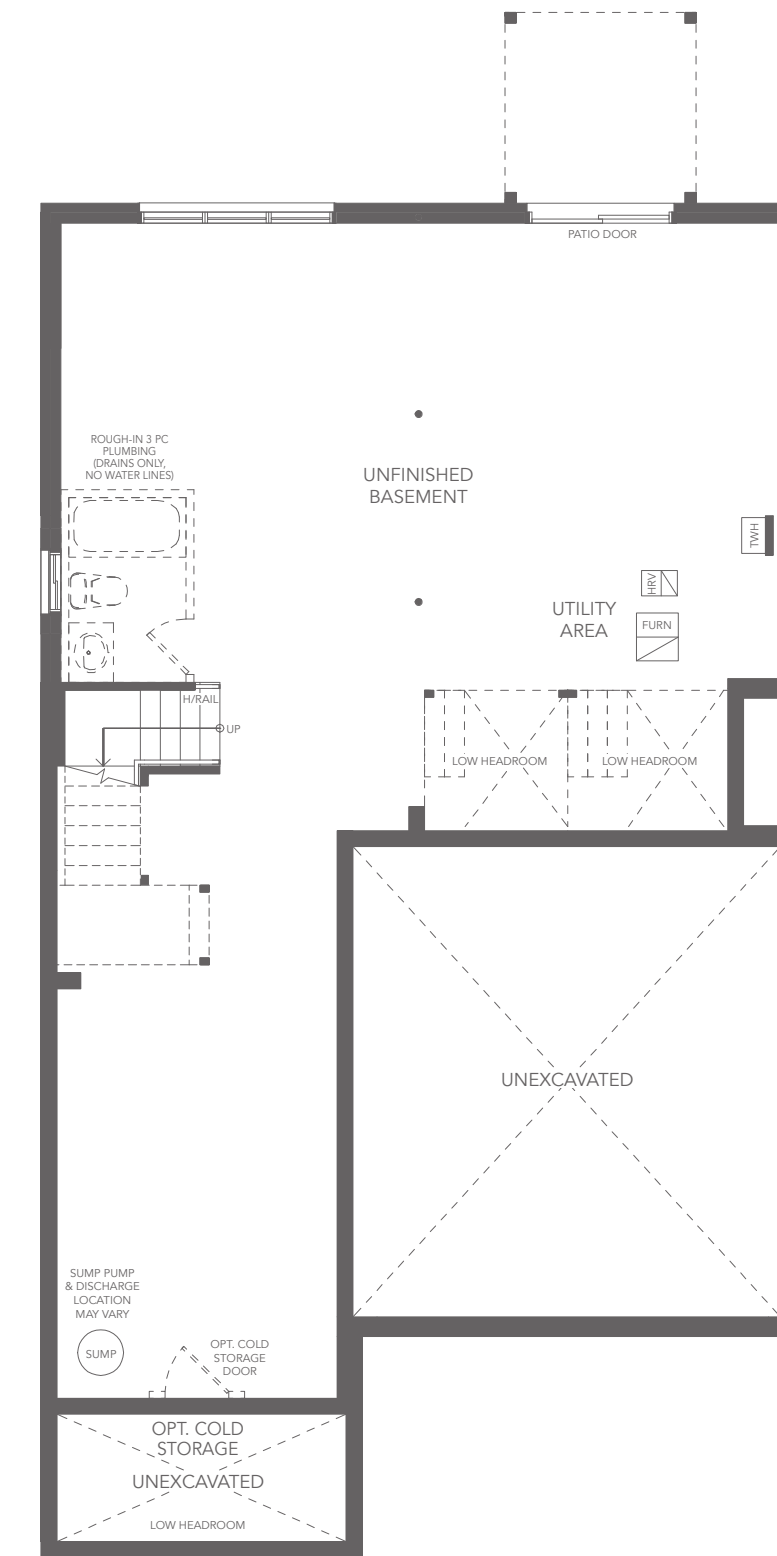
BA38-12



GROUND FLOOR PLAN B



SECOND FLOOR PLAN B



BASEMENT PLAN B

38' singles