

# BROOKIN

## TOWNS

- ⊠ 1,697 SQ.FT.
- 🛏 3 beds
- 🚿 2 baths
- 🚽 1 powder
- 🚗 1 garage

INTERIOR UNIT



TRADITIONAL  
**T-1697**

### TRADITIONAL TOWNS 2 STOREY TOWNS BLOCKS: 1 AND 2

- T-1697  
1697 SQ.FT.
- T-1715  
1715 SQ.FT.
- T-1729  
1729.FT.

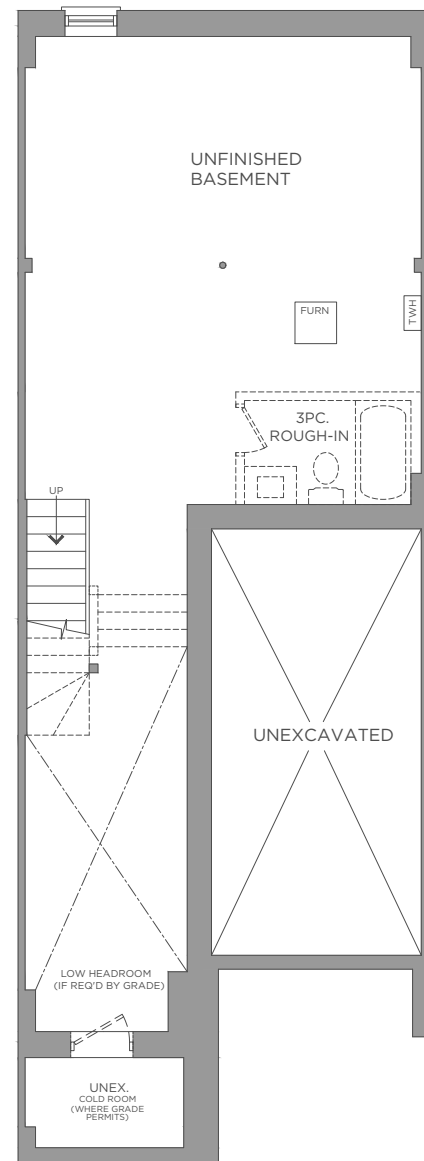
### STREET TOWNS 3 STOREY TOWNS BLOCKS: 3, 4, 5

- S-1951  
1951 SQ.FT.
- S-2010  
2010 SQ.FT.
- S-2147  
2147 SQ.FT.
- S-2182  
2182 SQ.FT.
- S-2467  
2467 SQ.FT.

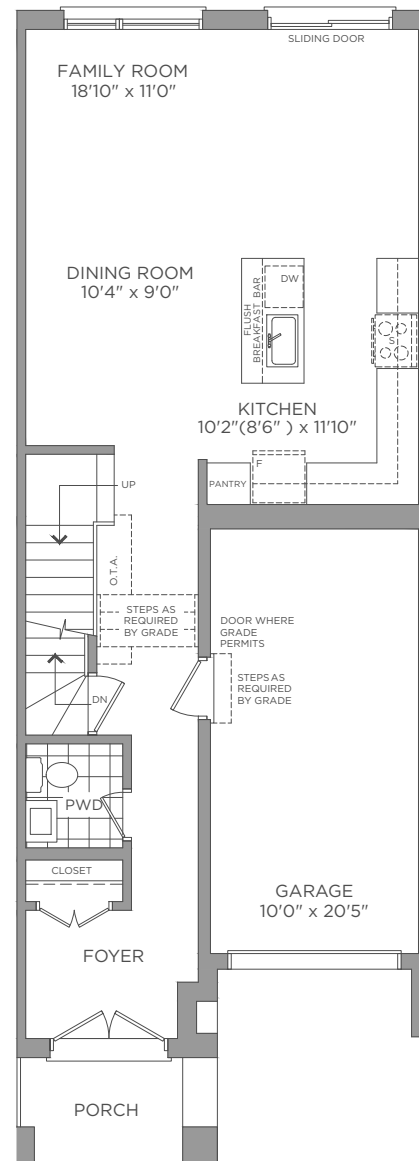
### CITY TOWNS 3 STOREY TOWNS BLOCKS: 6, 7, 8, 9, 10

- C-1944  
1944 SQ.FT.
- C-1952  
1952 SQ.FT.
- C-1958  
1958 SQ.FT.
- C-2030  
2030 SQ.FT.
- C-2063  
2063 SQ.FT.
- C-2300  
2300 SQ.FT.

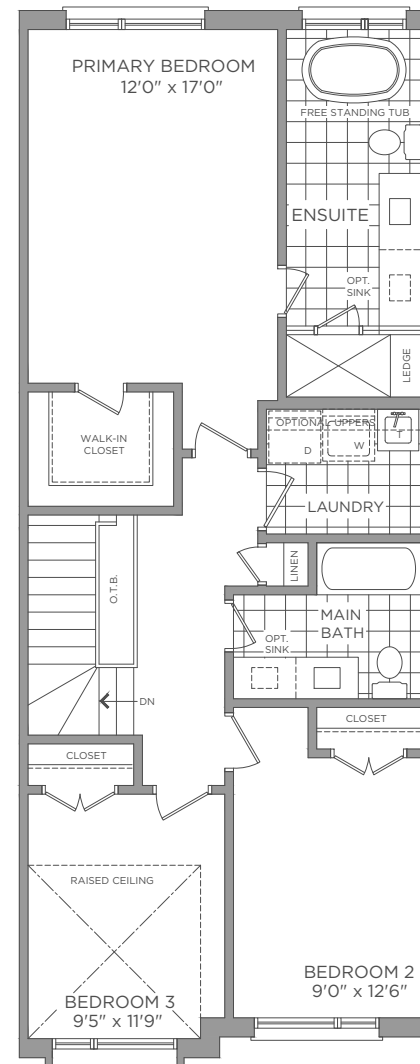




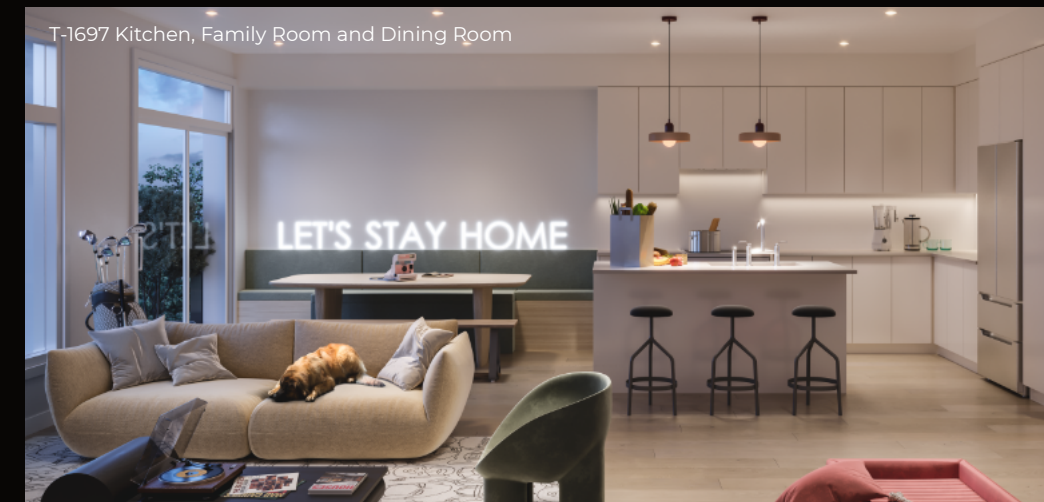
BASEMENT  
ELEVATION A



FIRST FLOOR  
ELEVATION A



SECOND FLOOR  
ELEVATION A



# BROOKIN

## TOWNS

- ⊠ 1,729 SQ.FT.
- 🛏 3 beds
- 🚿 2 baths
- 🚽 1 powder
- 🚗 1 garage

INTERIOR END UNIT



TRADITIONAL  
**T-1729**

### TRADITIONAL TOWNS 2 STOREY TOWNS BLOCKS: 1 AND 2

- T-1697  
1697 SQ.FT.
- T-1715  
1715 SQ.FT.
- T-1729  
1729.FT.

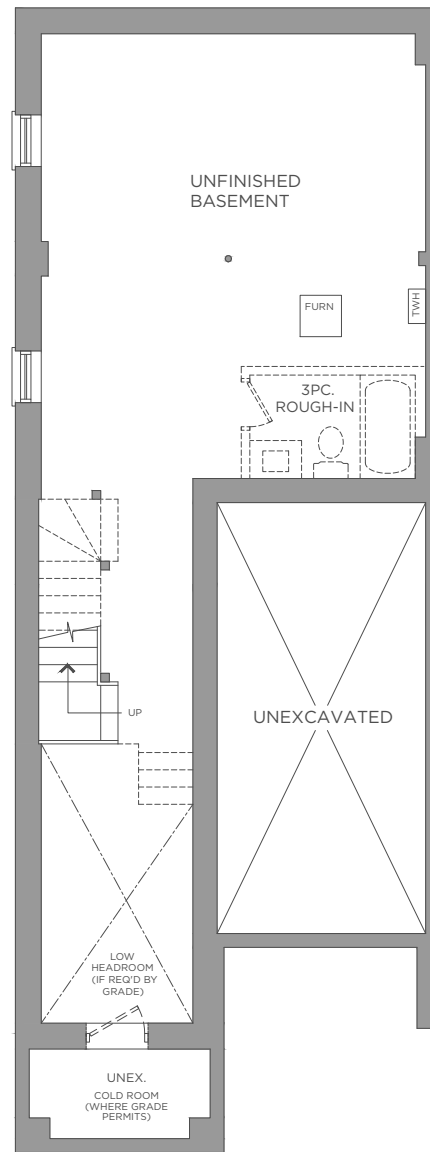
### STREET TOWNS 3 STOREY TOWNS BLOCKS: 3, 4, 5

- S-1951  
1951 SQ.FT.
- S-2010  
2010 SQ.FT.
- S-2147  
2147 SQ.FT.
- S-2182  
2182 SQ.FT.
- S-2467  
2467 SQ.FT.

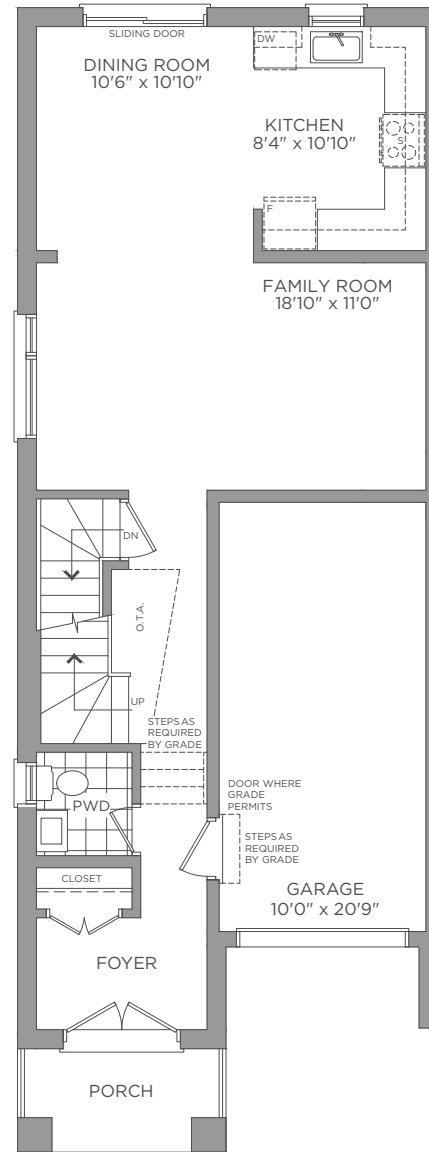
### CITY TOWNS 3 STOREY TOWNS BLOCKS: 6, 7, 8, 9, 10

- C-1944  
1944 SQ.FT.
- C-1952  
1952 SQ.FT.
- C-1958  
1958 SQ.FT.
- C-2030  
2030 SQ.FT.
- C-2063  
2063 SQ.FT.
- C-2300  
2300 SQ.FT.

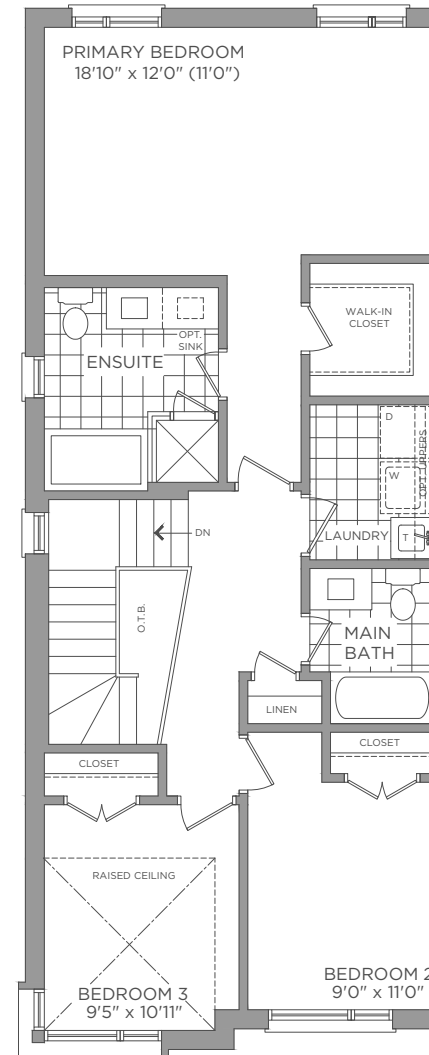




BASEMENT  
ELEVATION A



FIRST FLOOR  
ELEVATION A



SECOND FLOOR  
ELEVATION A

