

GREAT GULF  
WHITBY  
MEADOWS

# ENCORE

fullhouse  
COLLECTION



## Semis

### Canary

FOUR BEDROOM  
WTSD-12

Elevation A - 2,535 sq. ft.  
INCLUDES 550 SQ. FT. OF  
FINISHED BASEMENT

Elevation B - 2,425 sq. ft.  
INCLUDES 530 SQ. FT. OF  
FINISHED BASEMENT

Elevation C - 2,460 sq. ft.  
INCLUDES 540 SQ. FT. OF  
FINISHED BASEMENT

Elevation D - 2,555 sq. ft.  
INCLUDES 555 SQ. FT. OF  
FINISHED BASEMENT



Elevation A - 2,535 sq. ft.

Elevation B - 2,425 sq. ft.



Elevation C - 2,460 sq. ft.

Elevation D - 2,555 sq. ft.

# Canary

## FOUR BEDROOM

Elevation A - 2,535 sq. ft.  
INCLUDES 550 SQ. FT. OF  
FINISHED BASEMENT

Elevation B - 2,425 sq. ft.  
INCLUDES 530 SQ. FT. OF  
FINISHED BASEMENT

Elevation C - 2,460 sq. ft.  
INCLUDES 540 SQ. FT. OF  
FINISHED BASEMENT

Elevation D - 2,555 sq. ft.  
INCLUDES 555 SQ. FT. OF  
FINISHED BASEMENT

WTSD-12

# Semis

All dimensions and floor plans are approximate. Sizes and specifications are subject to change without notice. Actual useable space may vary from the stated floor area.

\*All illustrations are artist's concept. Landscaping, hardscaping and exterior lighting are not included in the purchase price. Some items shown may be upgrades. E. & O.E. May 2024.

## fullhouse COLLECTION

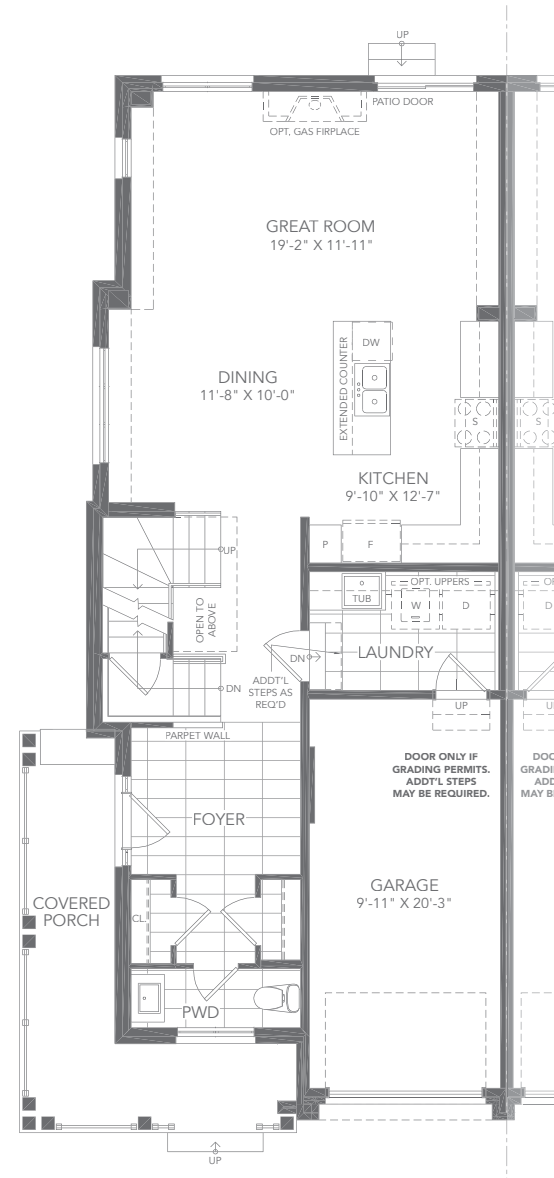
As part of Great Gulf's commitment to always deliver greater value, we bring you our new, exclusive and unprecedented collection of homes.

### YOUR FULL HOUSE INCLUDES:

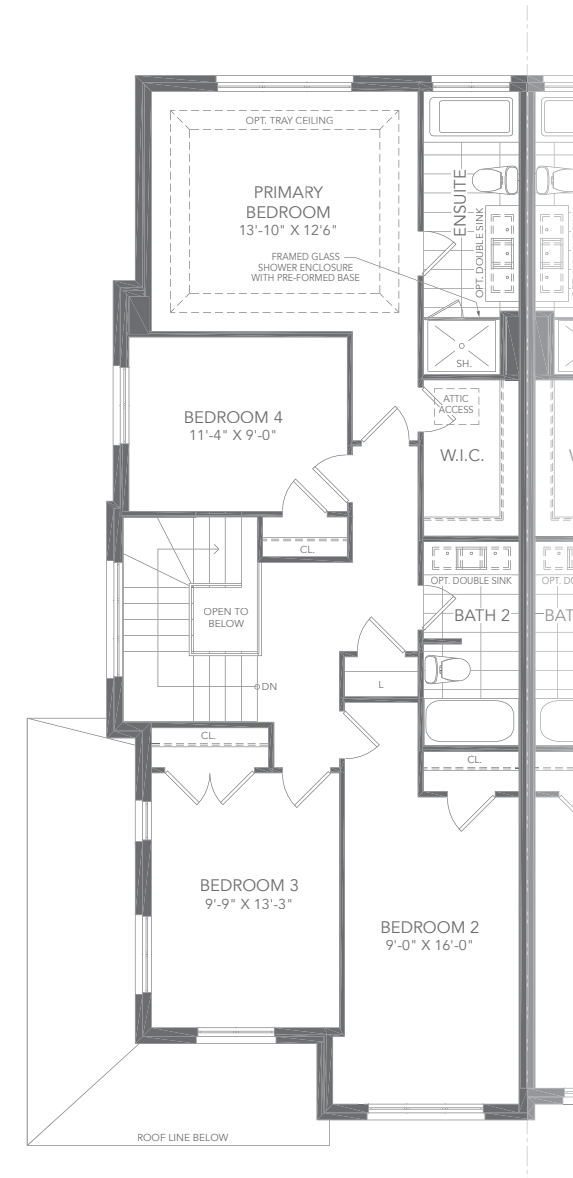
Finished basement with:

- Expansive recreation room
- Additional full bathroom
- Larger basement windows
- Full underslab insulation

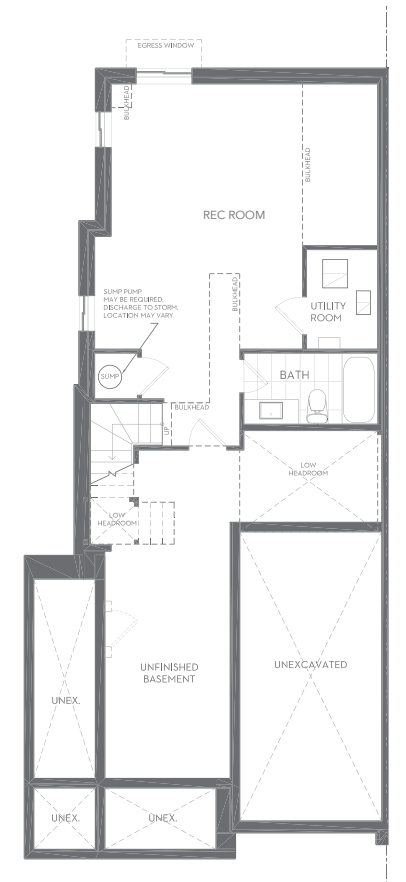
\*As grading permits. E. & O.E.



Ground Floor - Elevation A



Second Floor - Elevation A



Basement - Elevation A